

Landsat 8: Calibration Error in TIR Bands

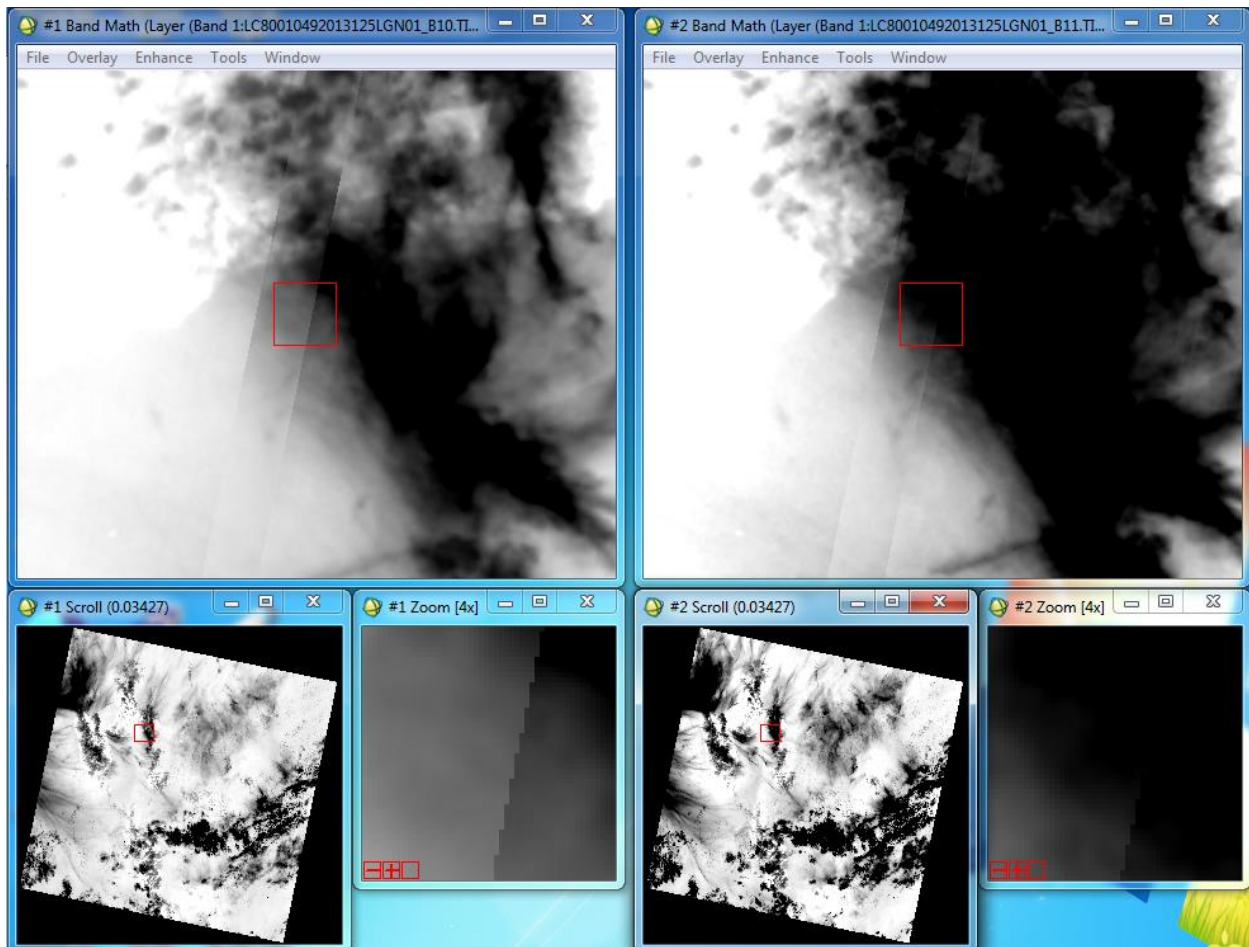
Unlike the calibration error in the cirrus band, these strips of calibration error are narrower, shorter, and harder to detect. Unfortunately, the differences in the pixel values across “the error boundary” are larger: 700-800 units in the DN values. Ex. 22726-23486.

❖ Dominica: 2013May05_TIR

[Image] Linear 2%

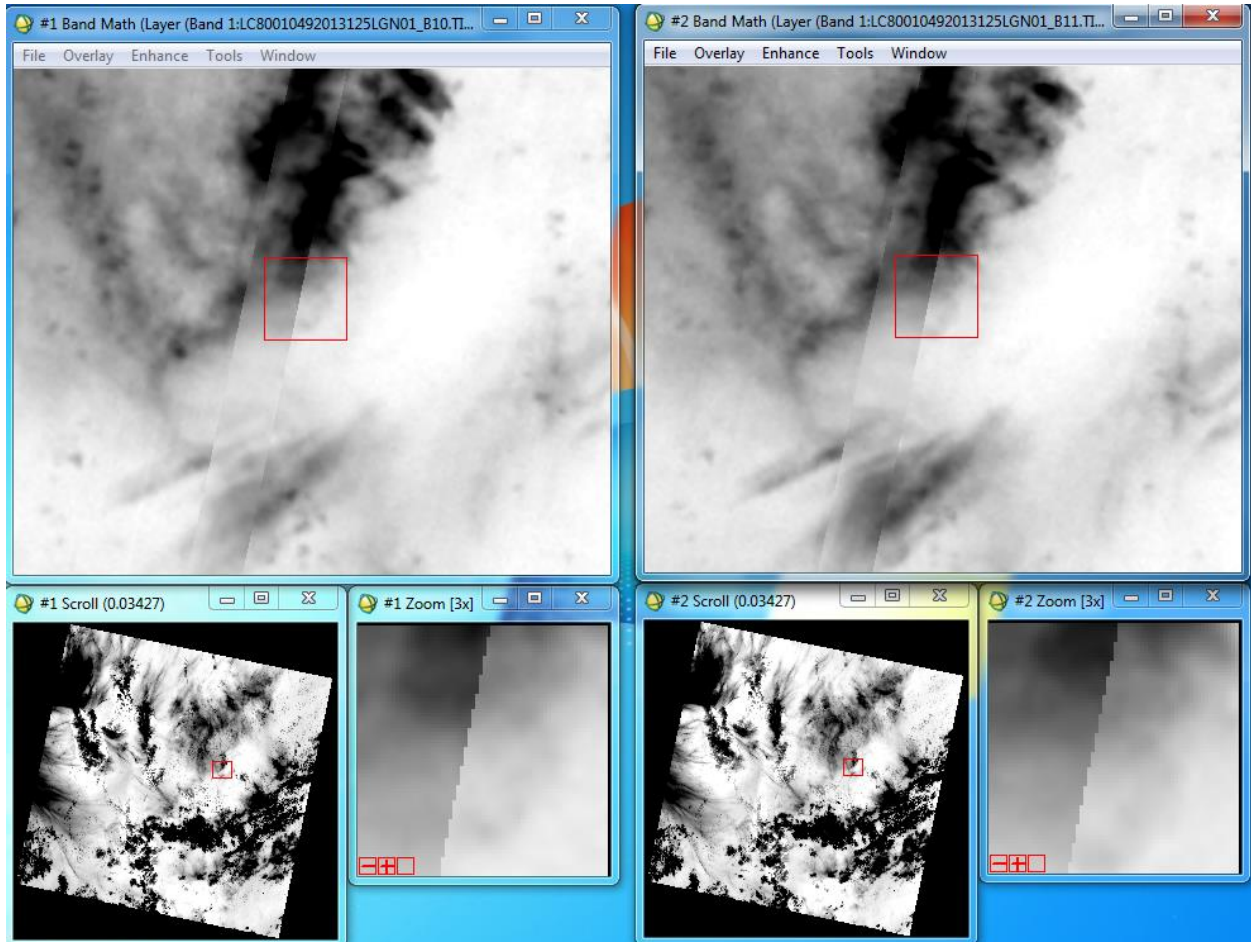
Left: Band 10 – TIR 1 (10.60-11.19)

Right: Band 11 – TIR 2 (11.50-12.51)



Left: Band 10 – TIR 1 (10.60-11.19)

Right: Band 11 – TIR 2 (11.50-12.51)



❖ Mississippi: 2013May24_TIR

[Image] Equalization

Left: Band 10 – TIR 1 (10.60-11.19)

Right: Band 11 – TIR 2 (11.50-12.51)

