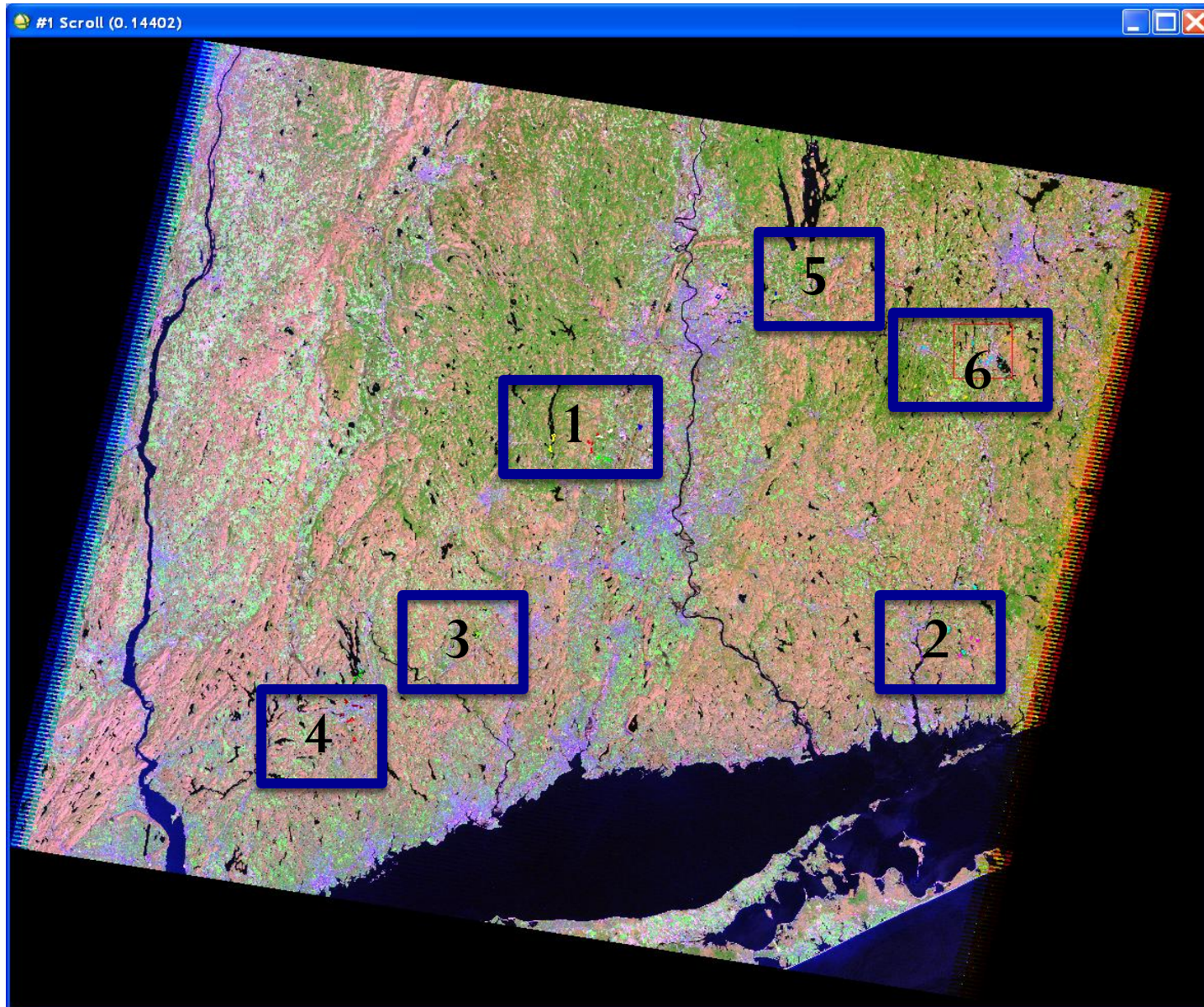


Compare Temperature, NDVI, and Albedo among Different Land Covers

Ziyan Chu

July 28th

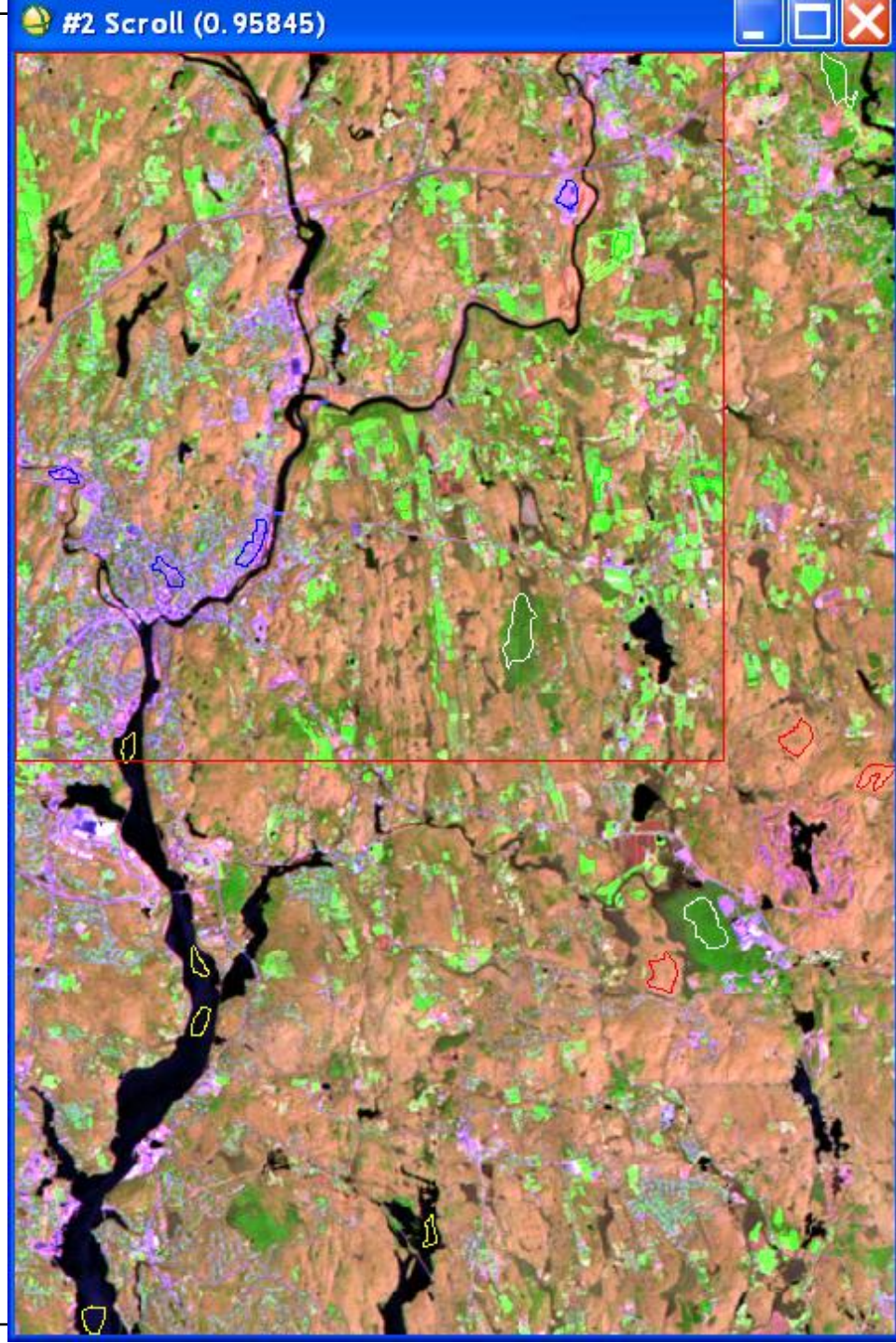
Localized Polygons (Replicas)



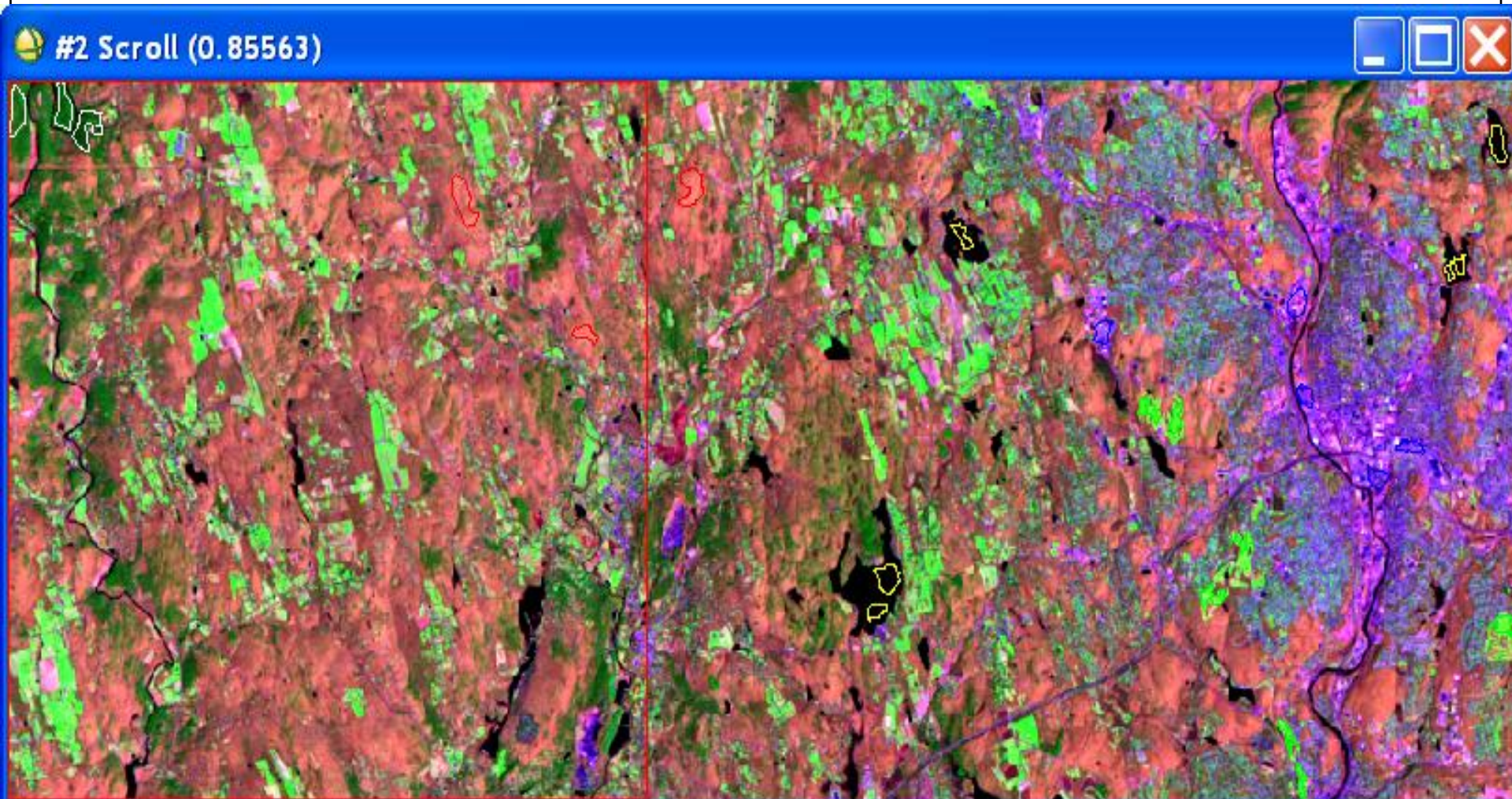
Replica 1



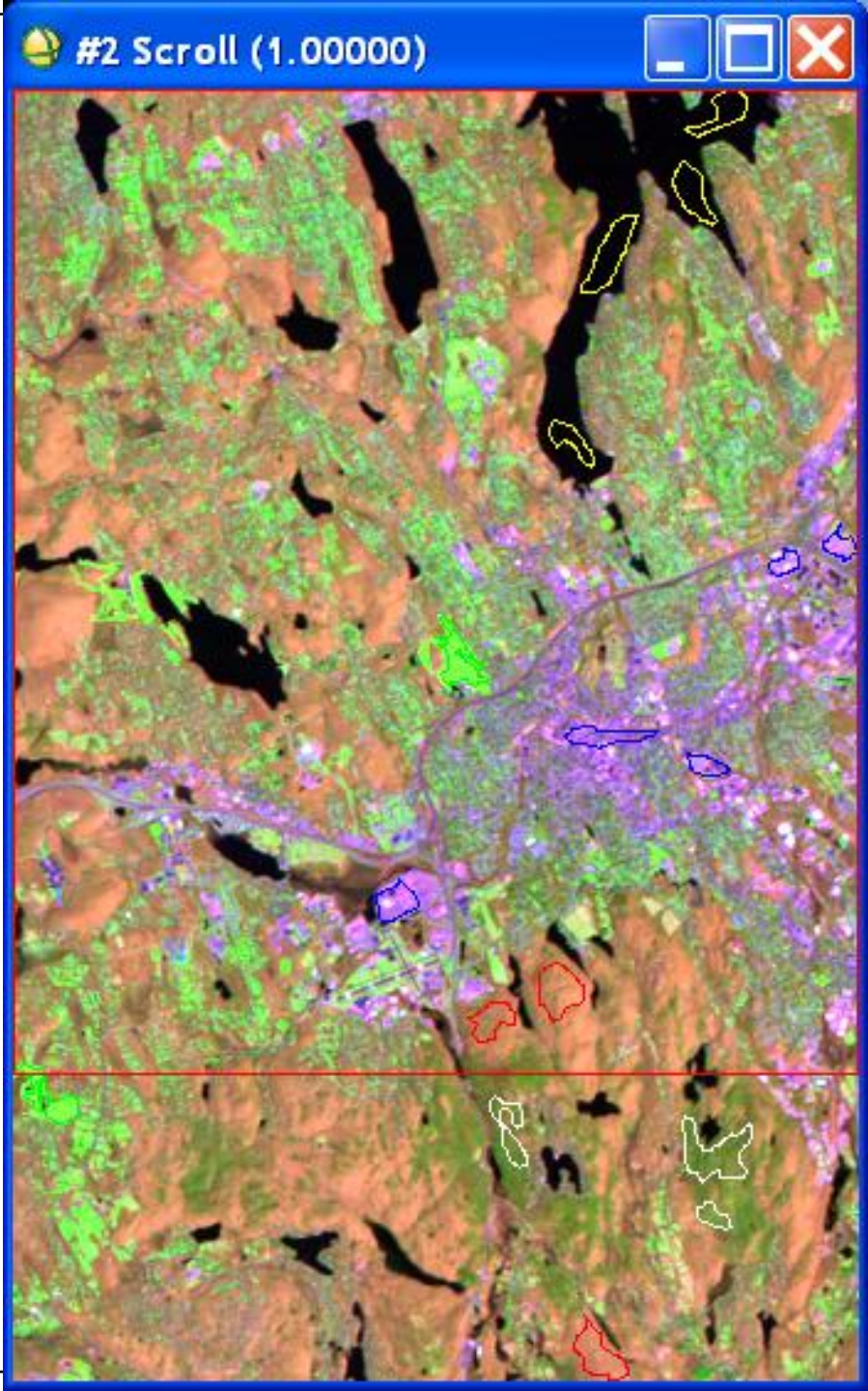
Replica 2



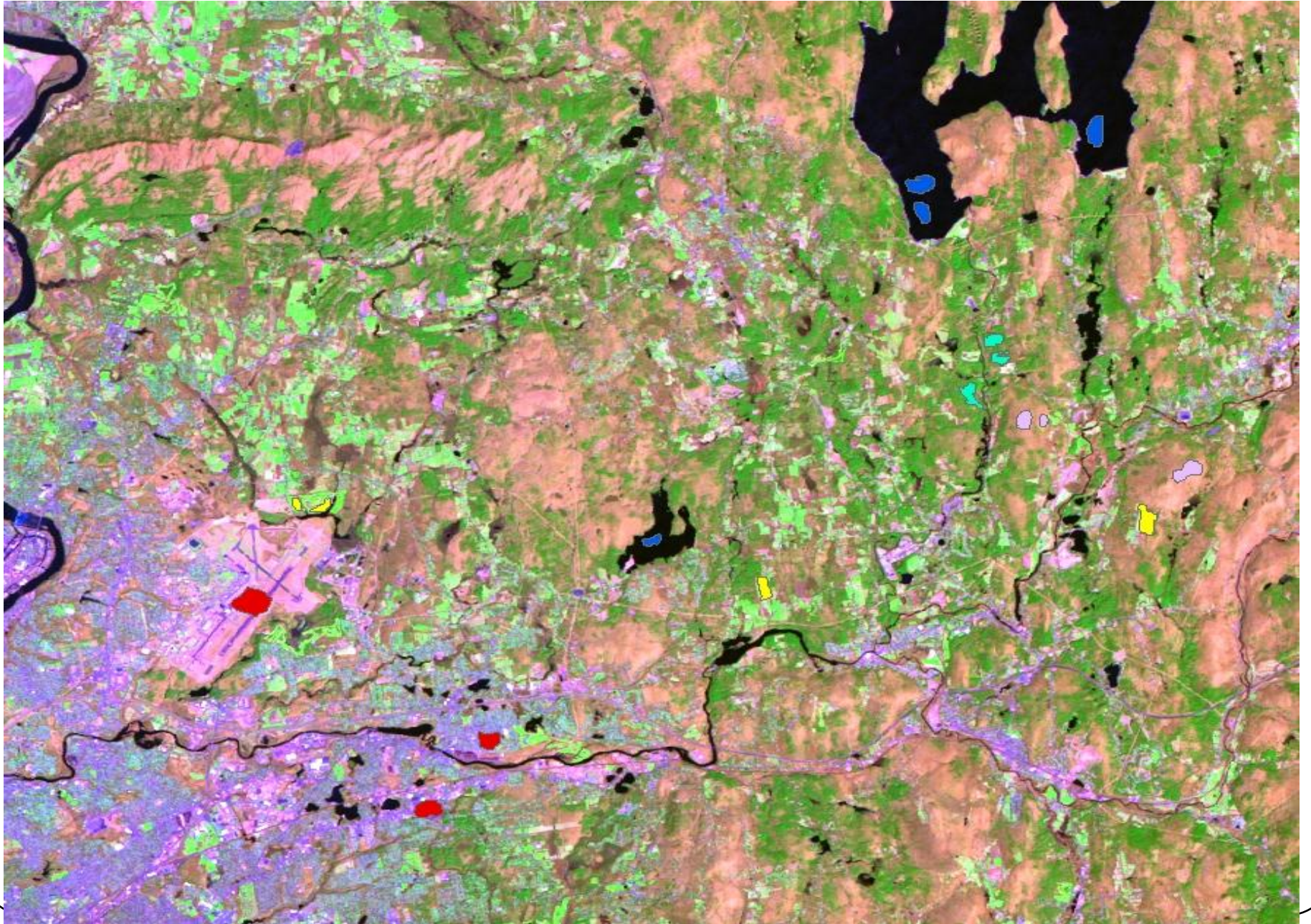
Replica 3

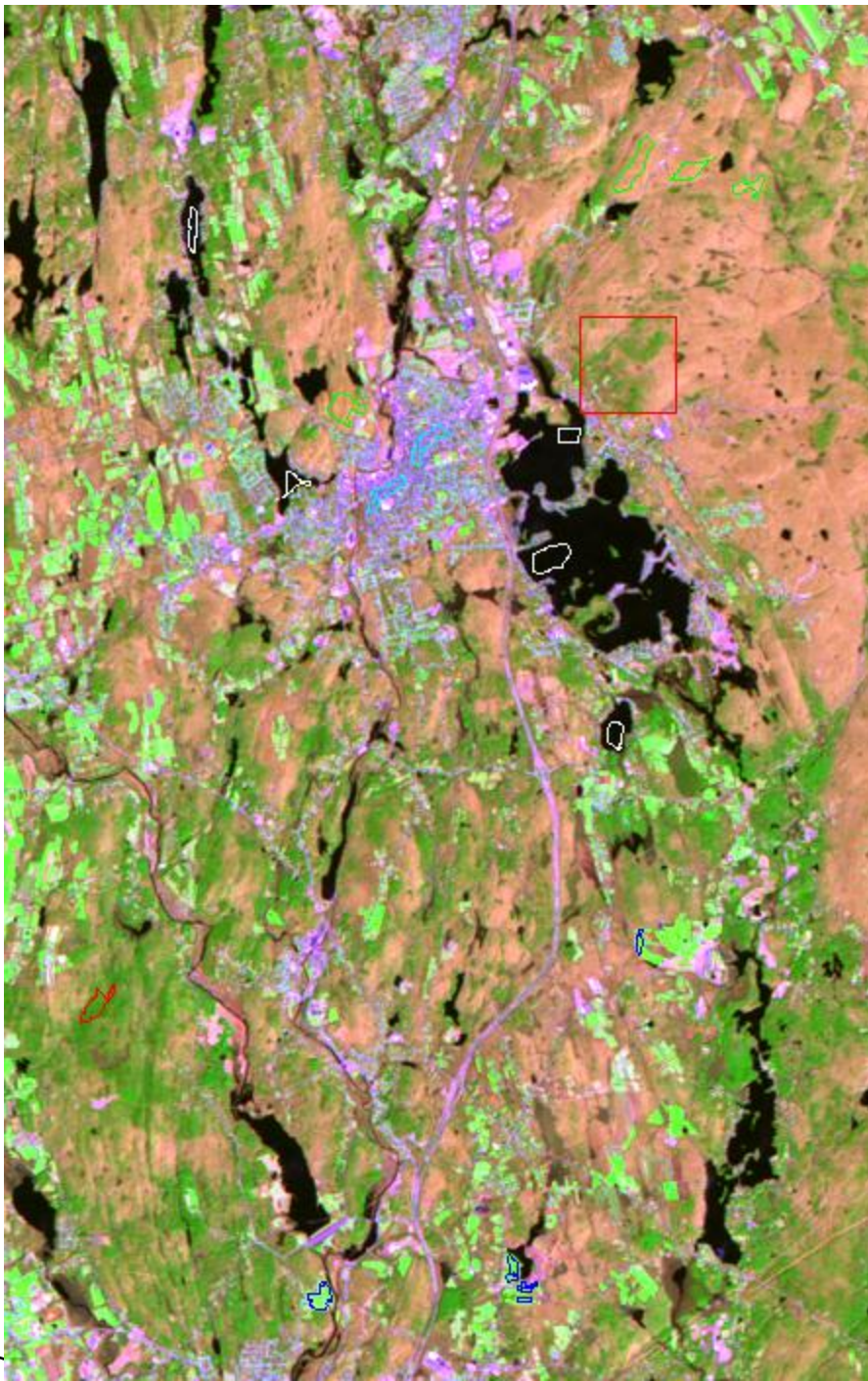


Replica 4



Replica 5



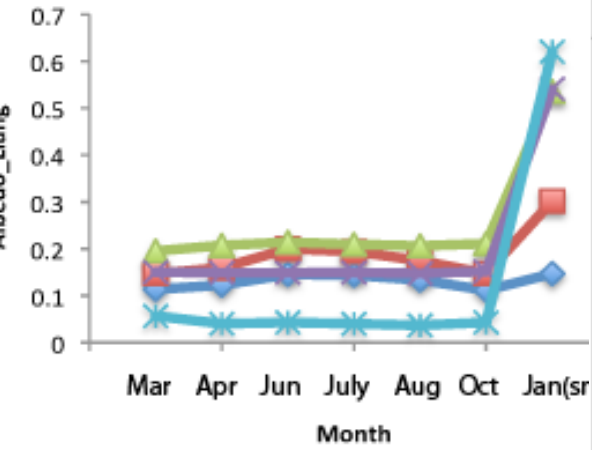


Replica 6

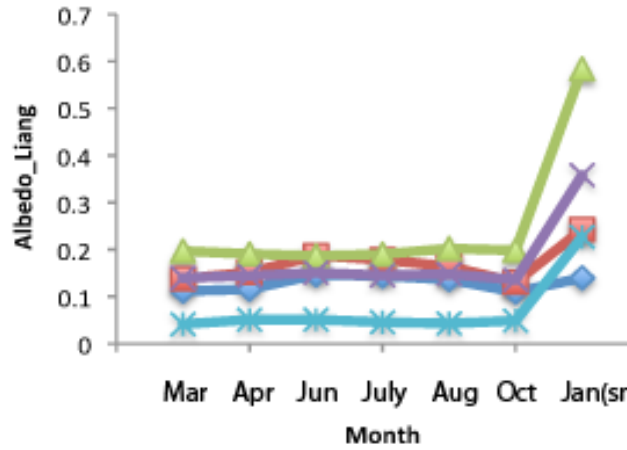
Comparison

- Replica 1-5:
 - Snow: Mar, Apr, June, July, Aug, Oct, Jan (snow)
 - Without snow: Mar, Apr, June, July, Aug, Oct, Jan
- Replica 6:
 - Snow: Mar, Apr, **June (ASTER)**, June, July, Aug, Oct, Jan (snow)
 - Without snow: Mar, Apr, **June (ASTER)**, June, July, Aug, Oct, Jan

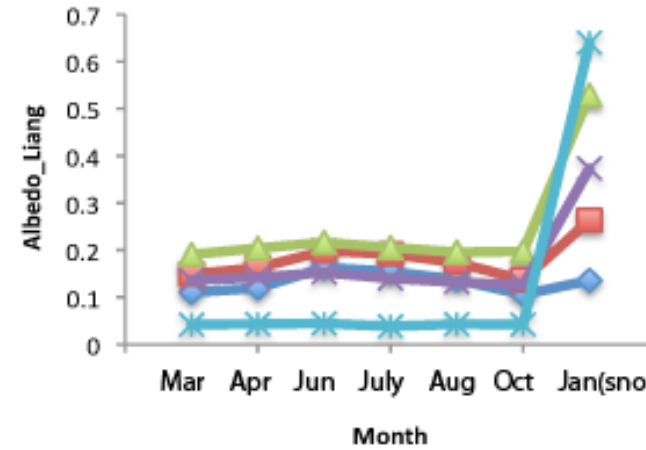
Albedo_Liang (snow)



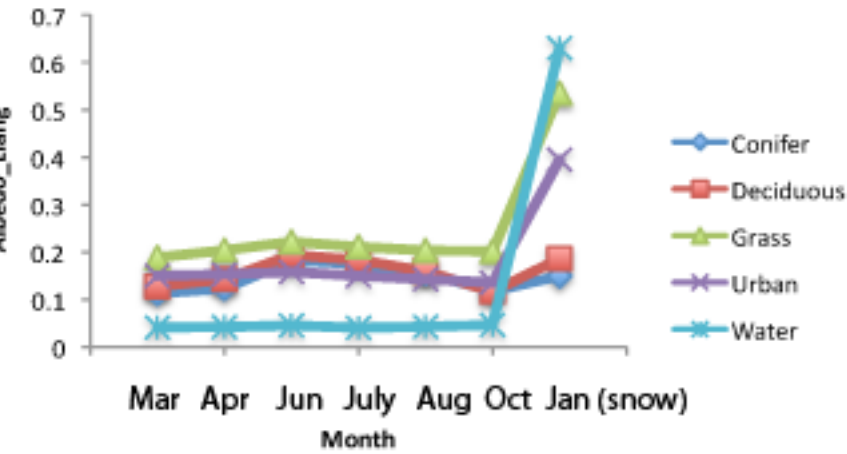
Albedo_Liang (snow)



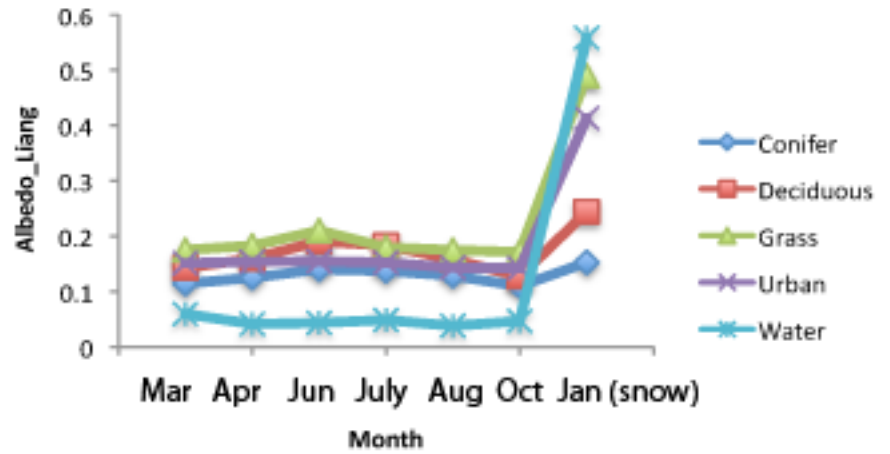
Albedo_Liang (snow)



Albedo_Liang (snow)

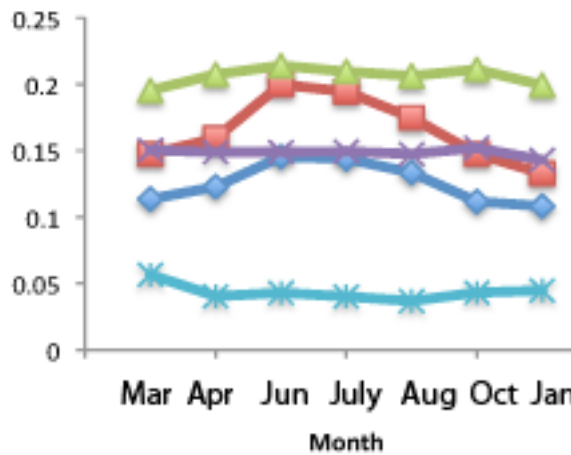


Albedo_Liang (snow)

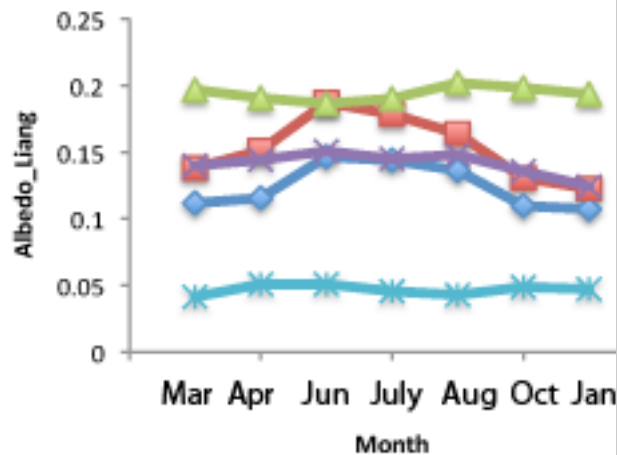


Albedo_Liang: Replica 1-5 including the snow image

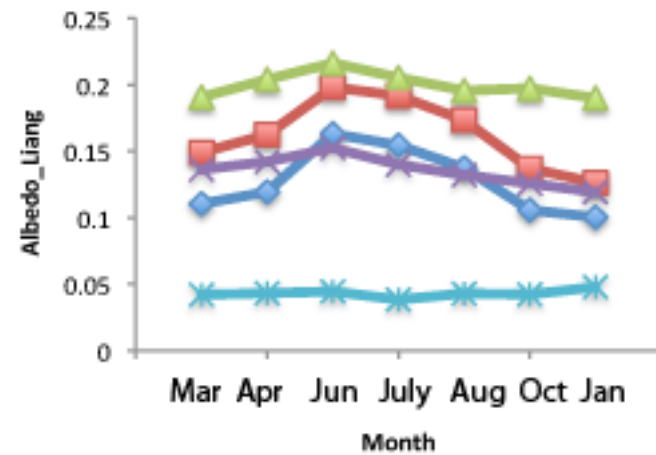
Albedo_Liang



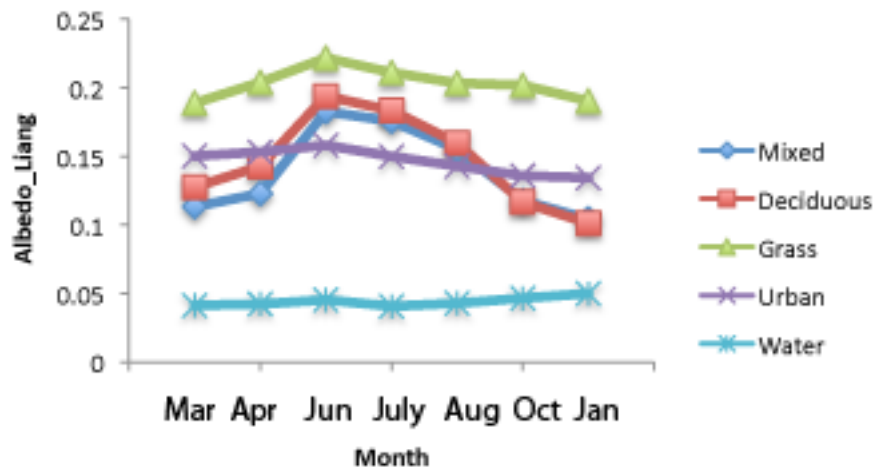
Albedo_Liang



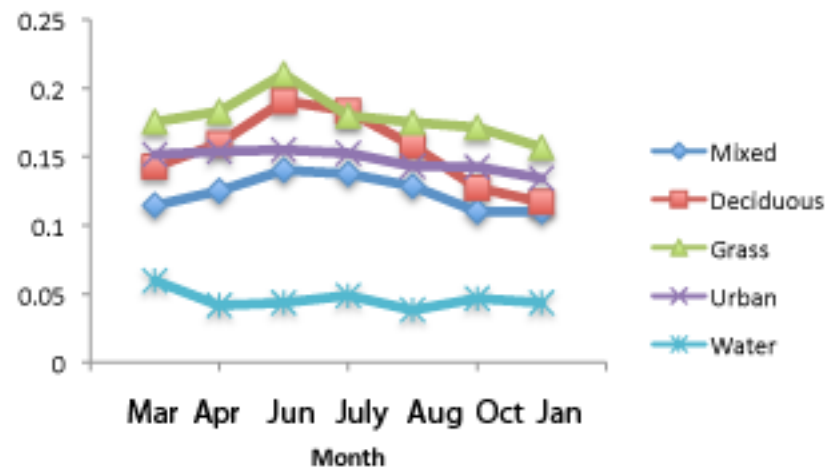
Albedo_Liang



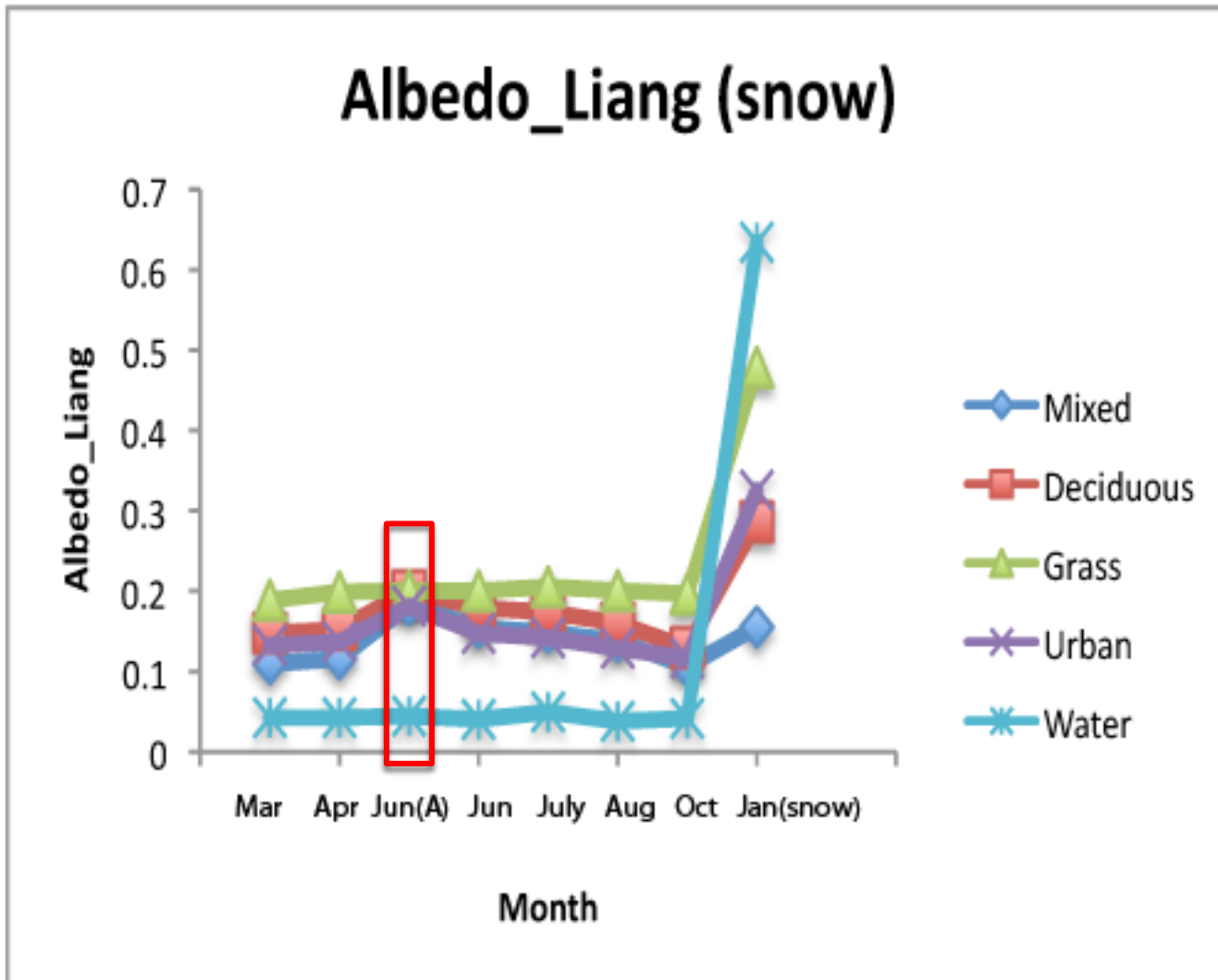
Albedo_Liang



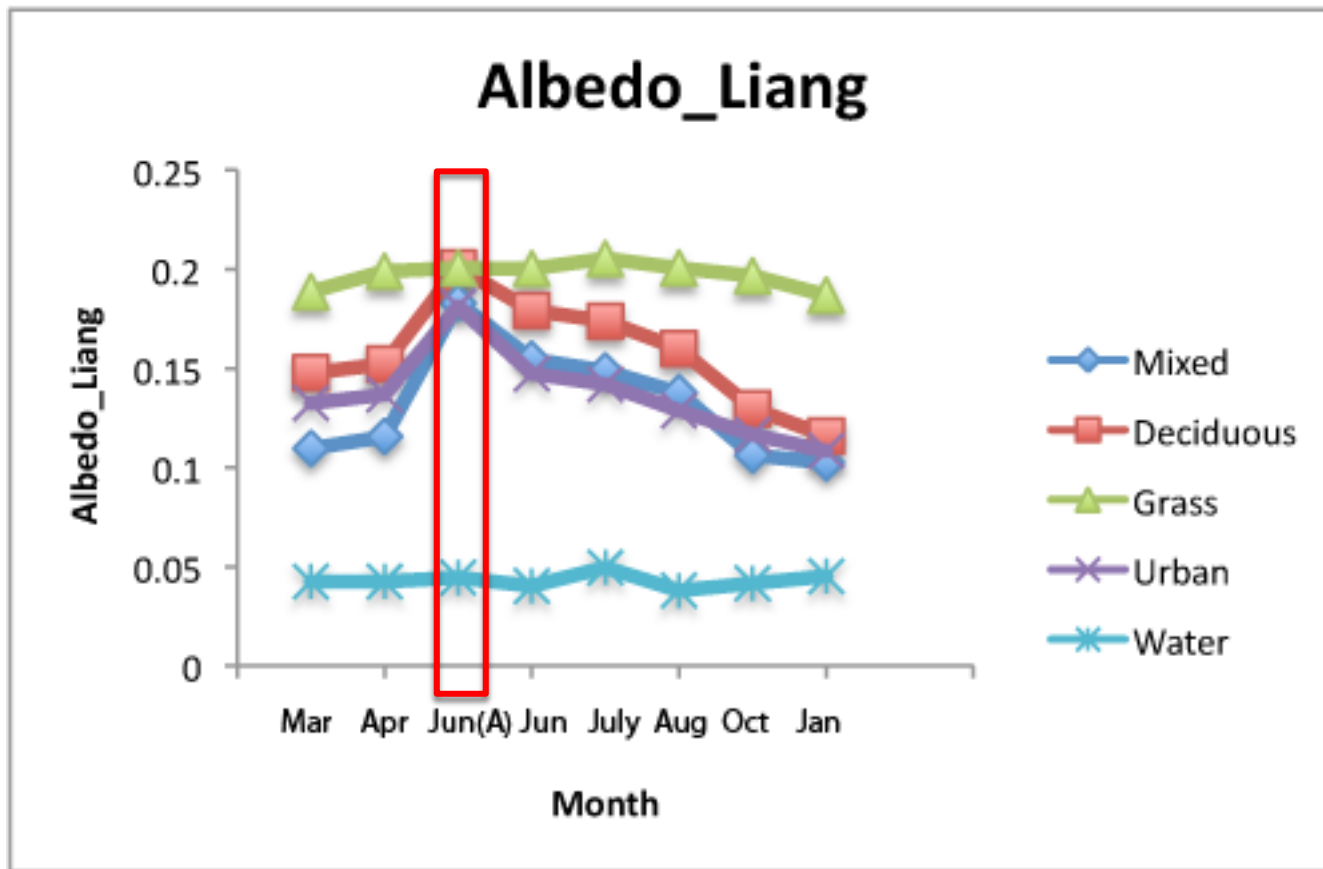
Albedo_Liang



Albedo_Liang: Replica 1-5 excluding the snow image

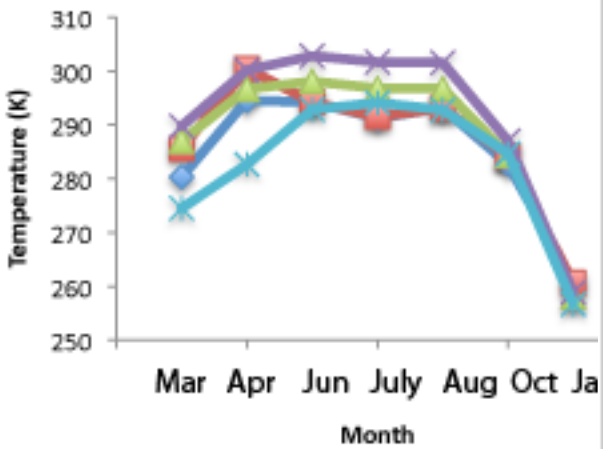


Albedo_Liang: Replica 6 including the snow image and the ASTER image

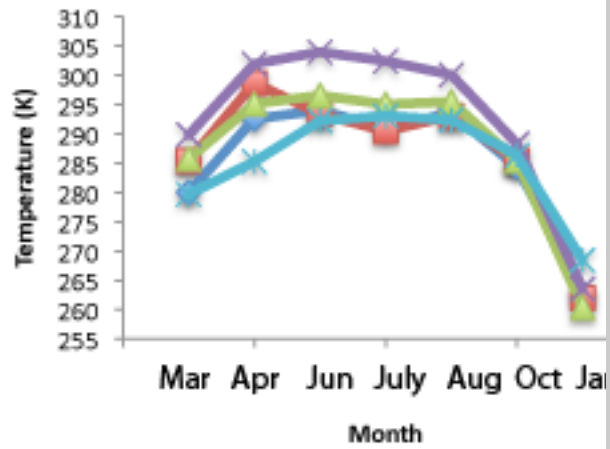


Albedo_Liang: Replica 6 including the ASTER image but without snow

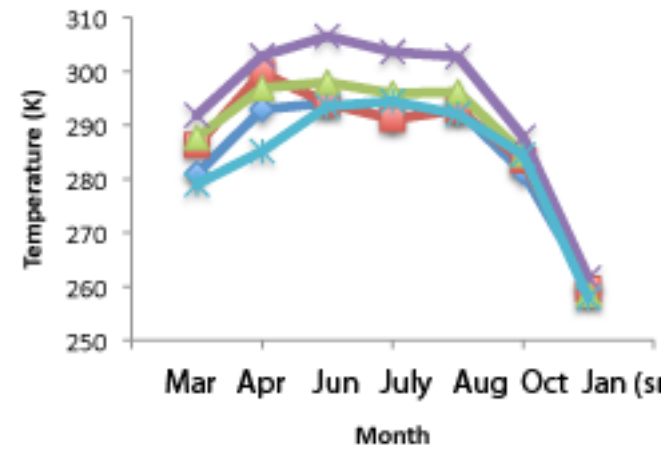
Temperature (K) (snow)



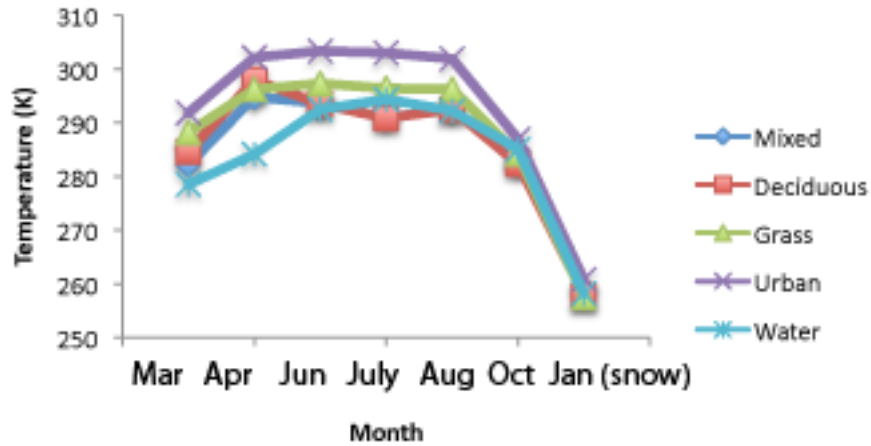
Temperature (K) (snow)



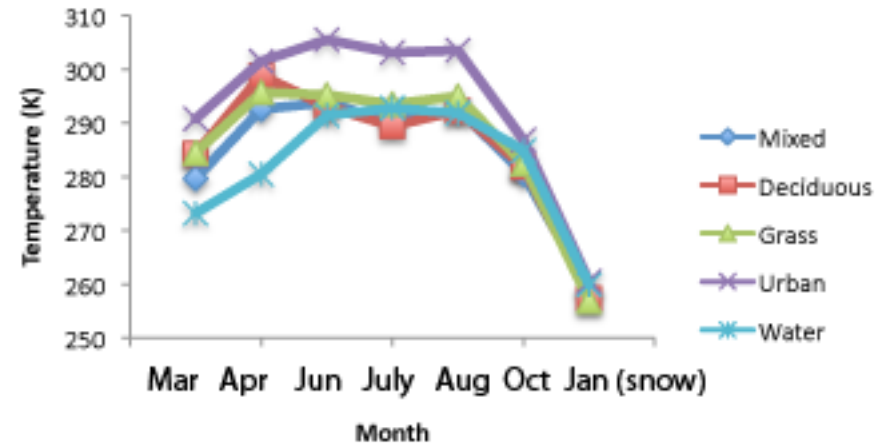
Temperature (K) (snow)



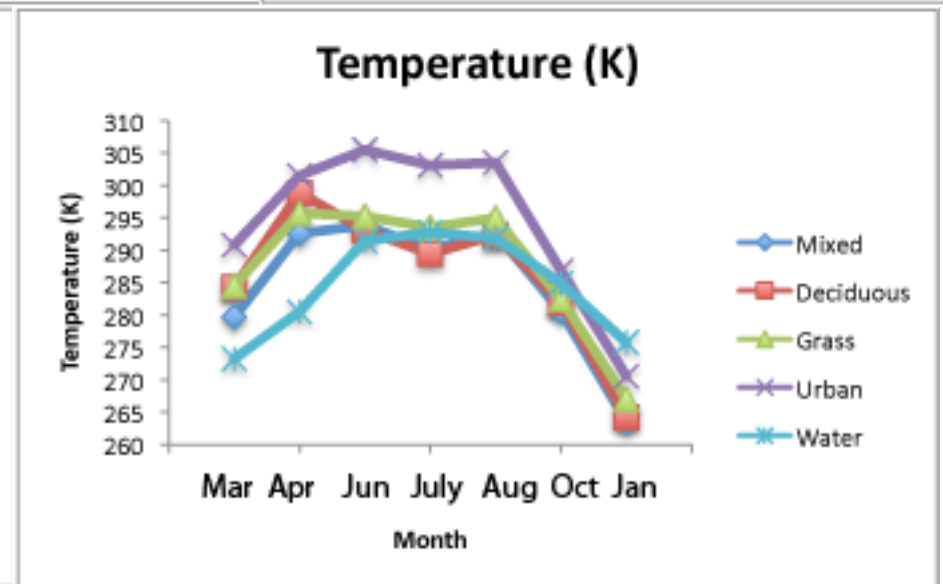
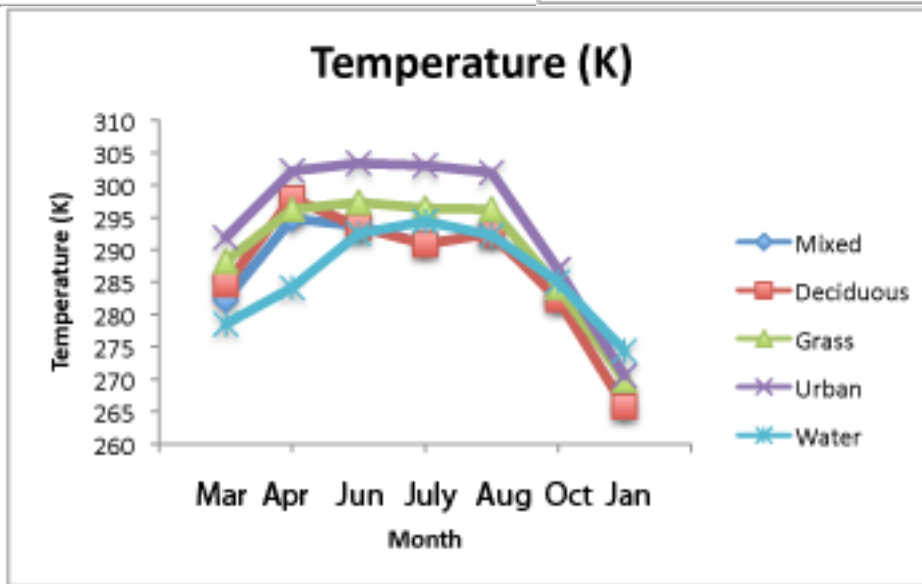
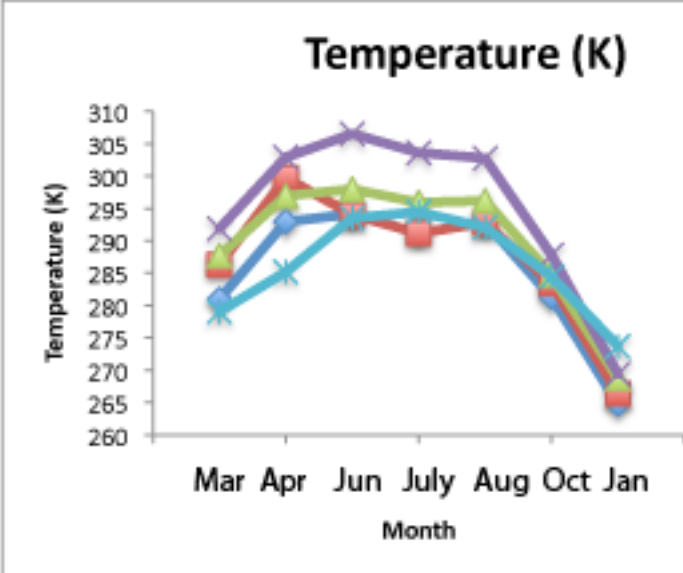
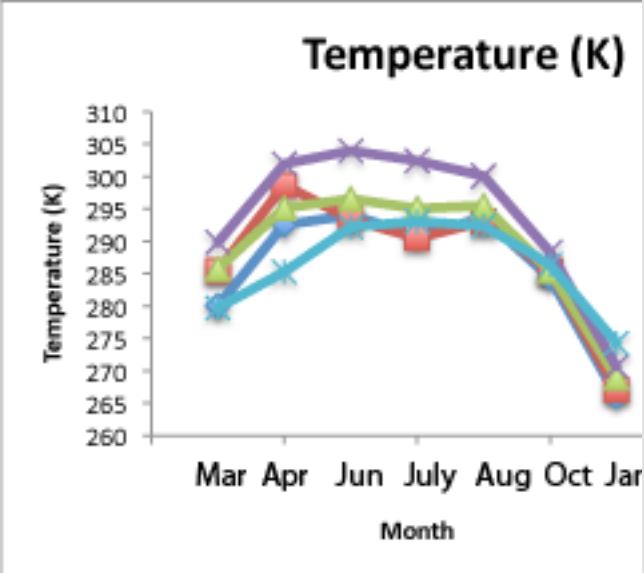
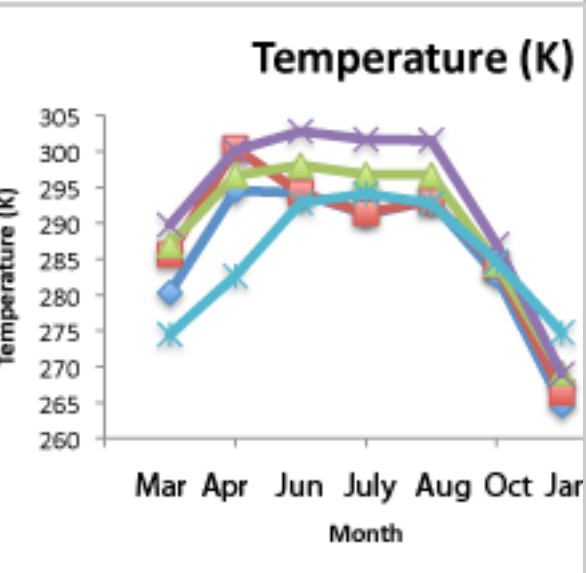
Temperature (K) (snow)



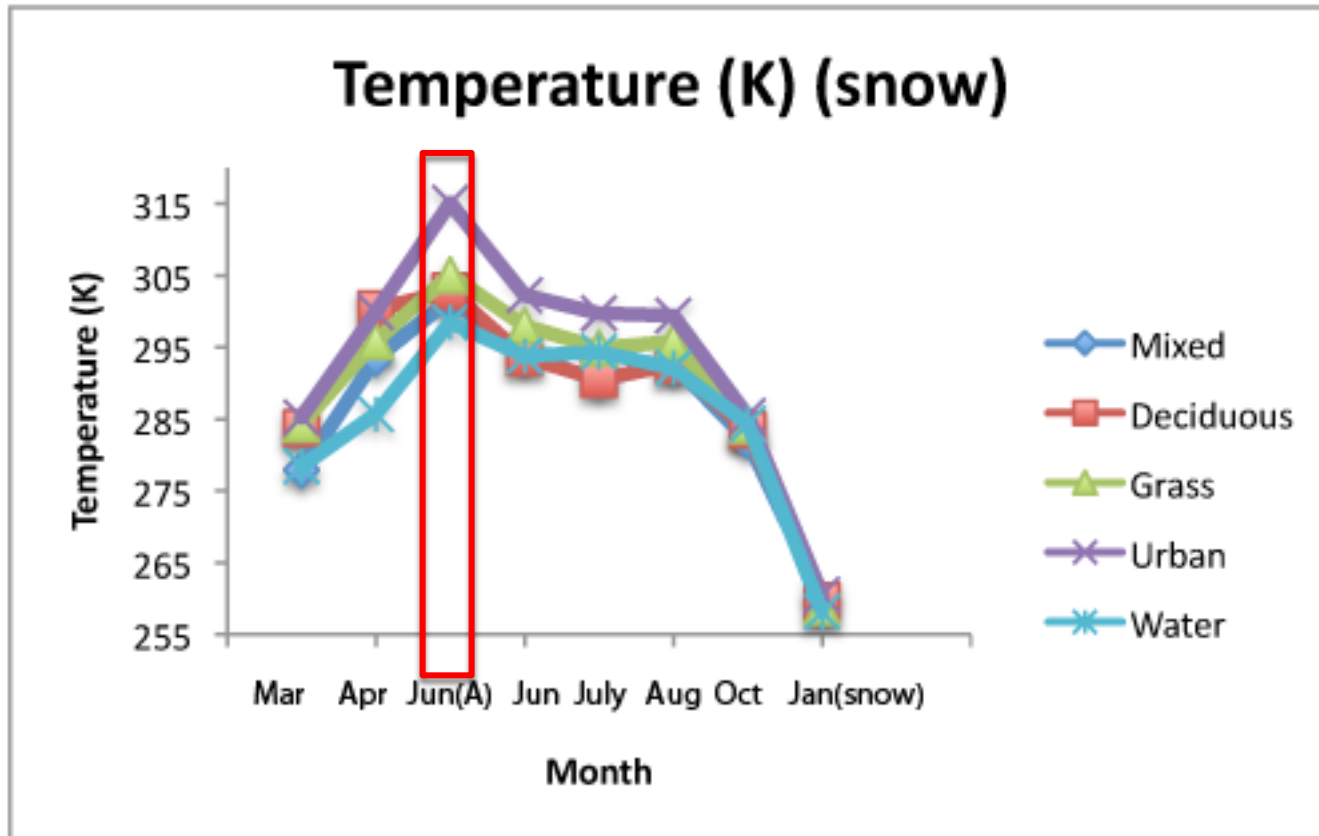
Temperature (K) (snow)



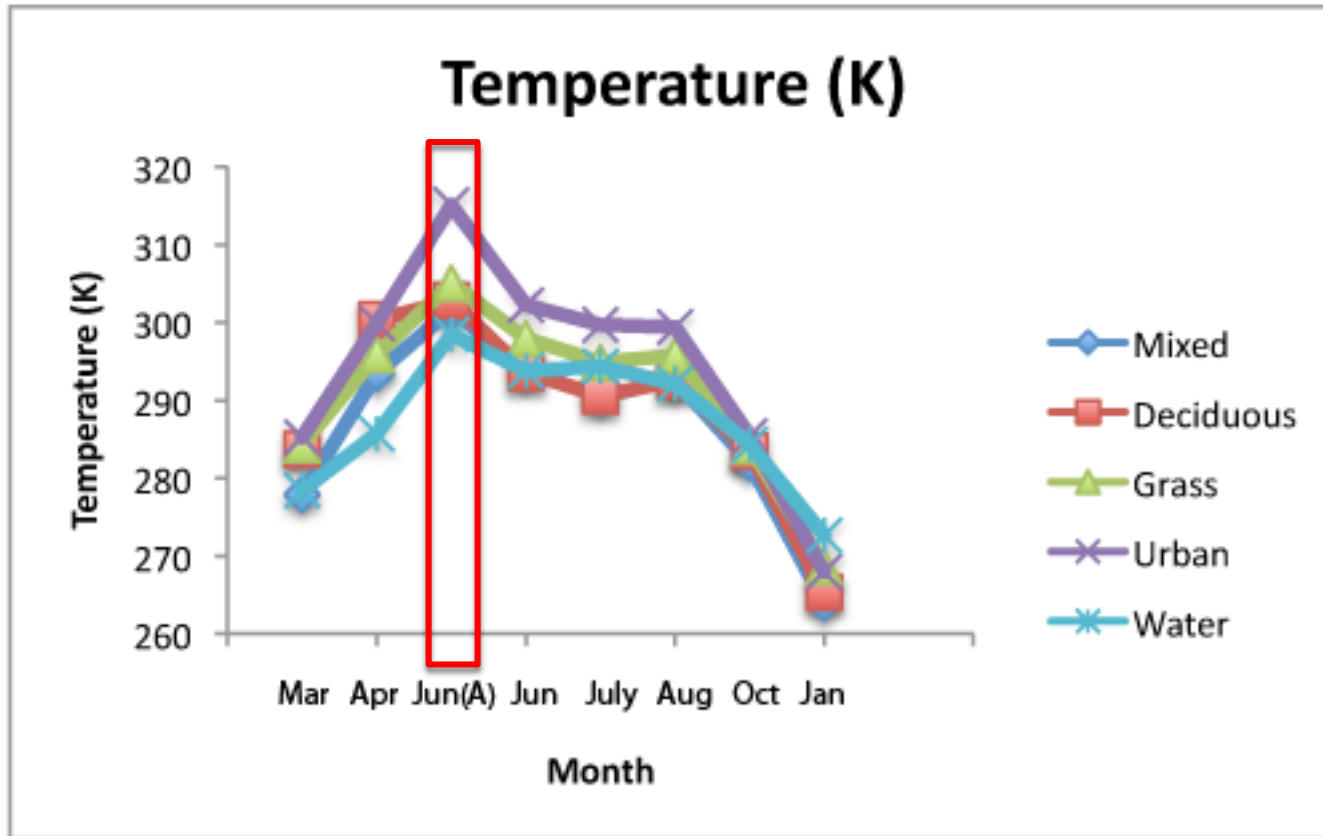
Surface Temperature: Replica 1-5 including the snow image



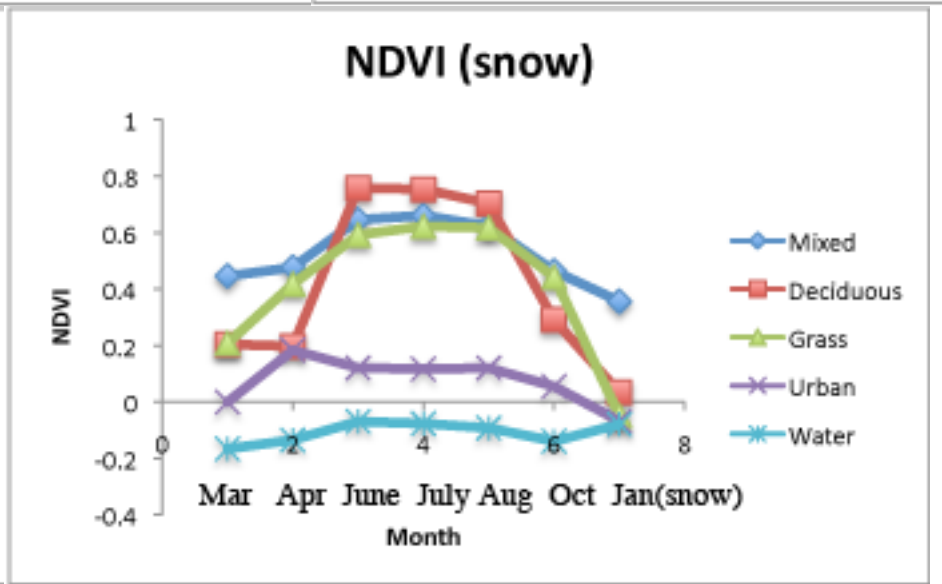
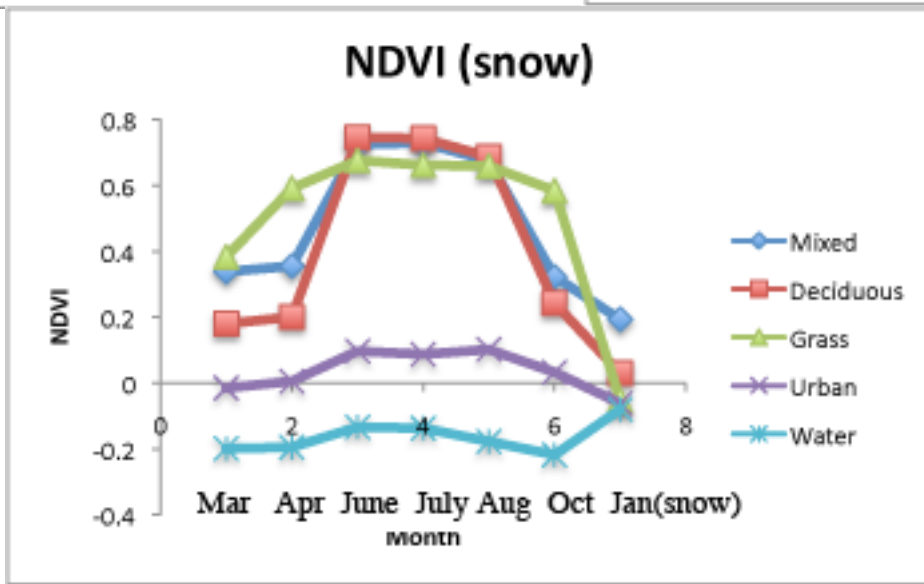
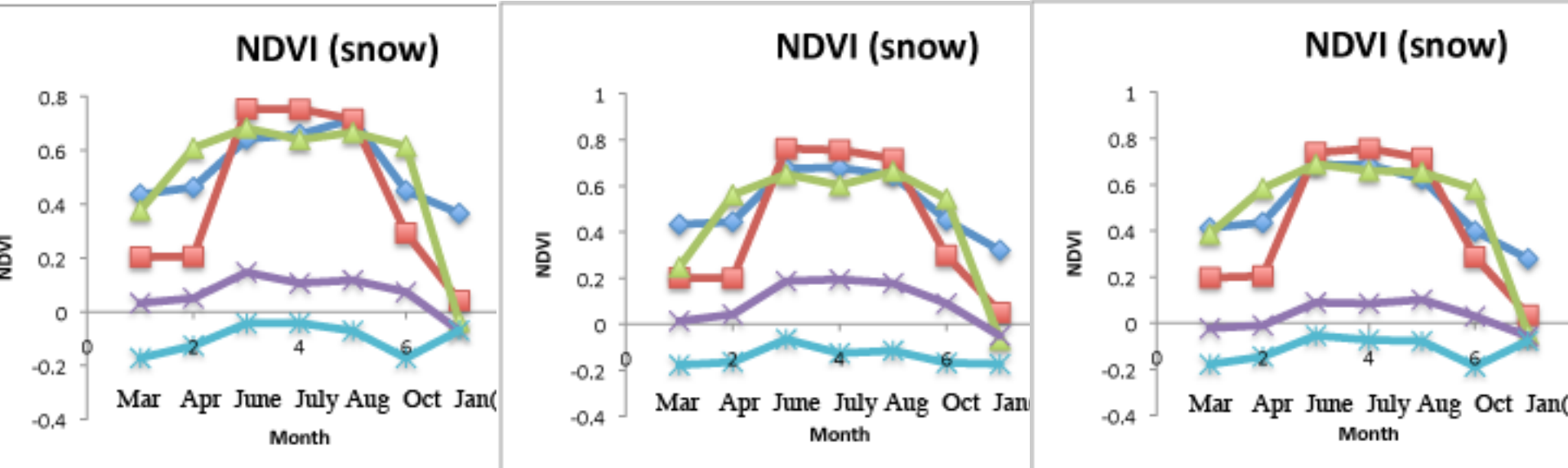
Surface Temperature: Replica 1-5 excluding the snow image



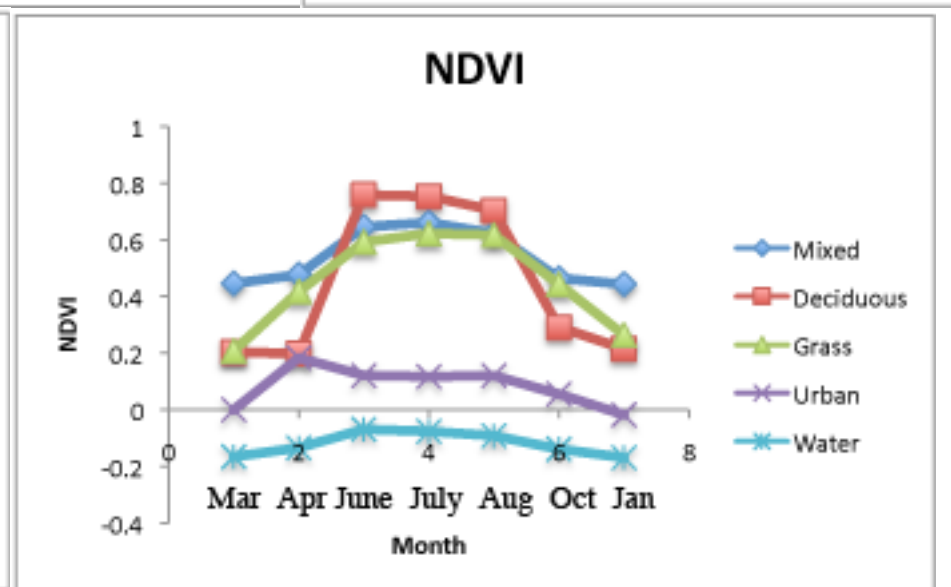
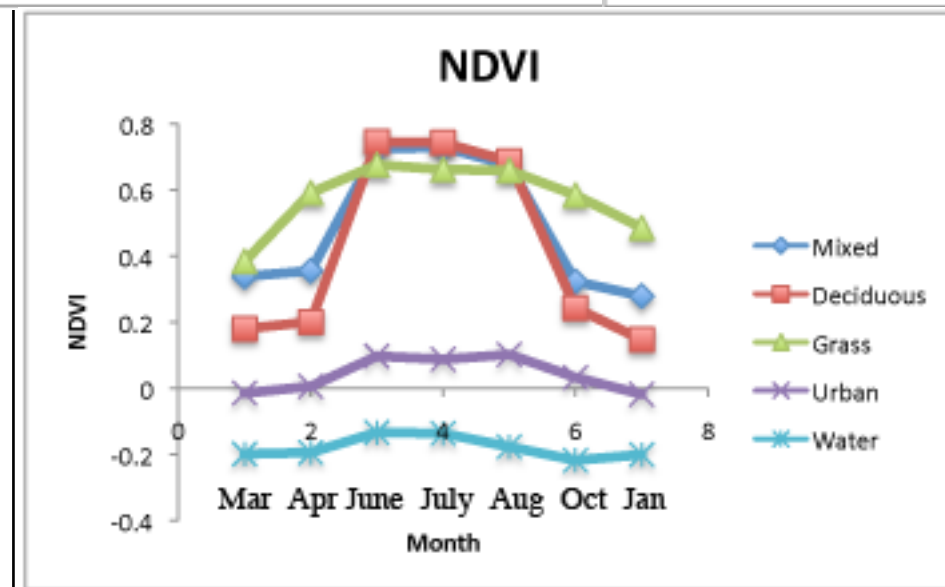
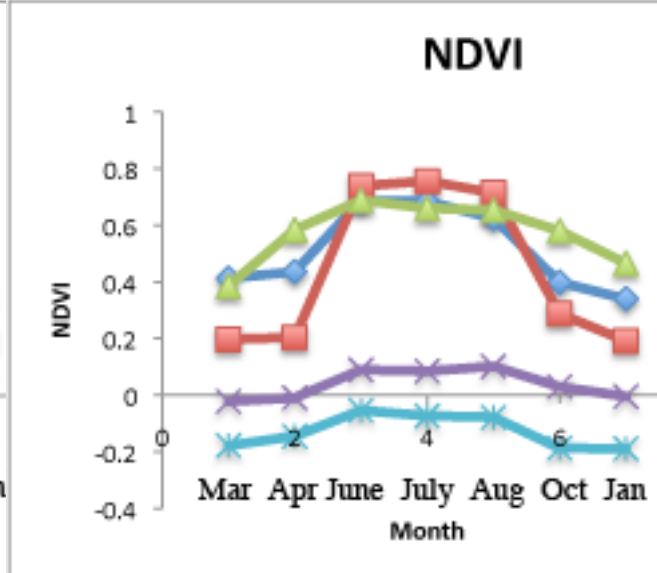
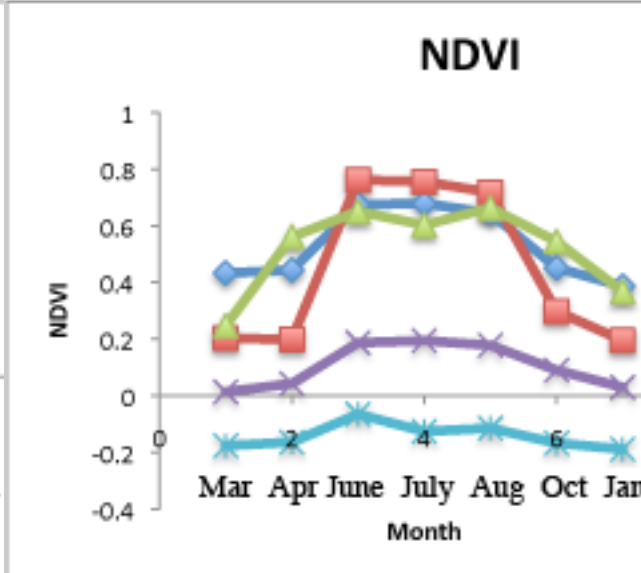
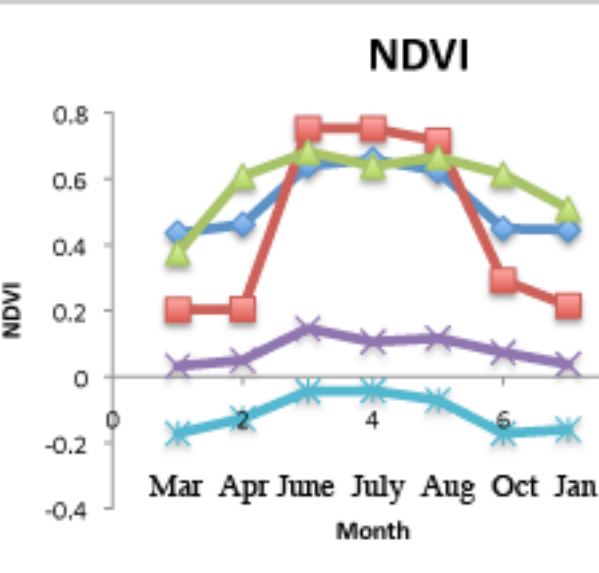
Surface Temperature: Replica 6 comparable with ASTER image, with snow



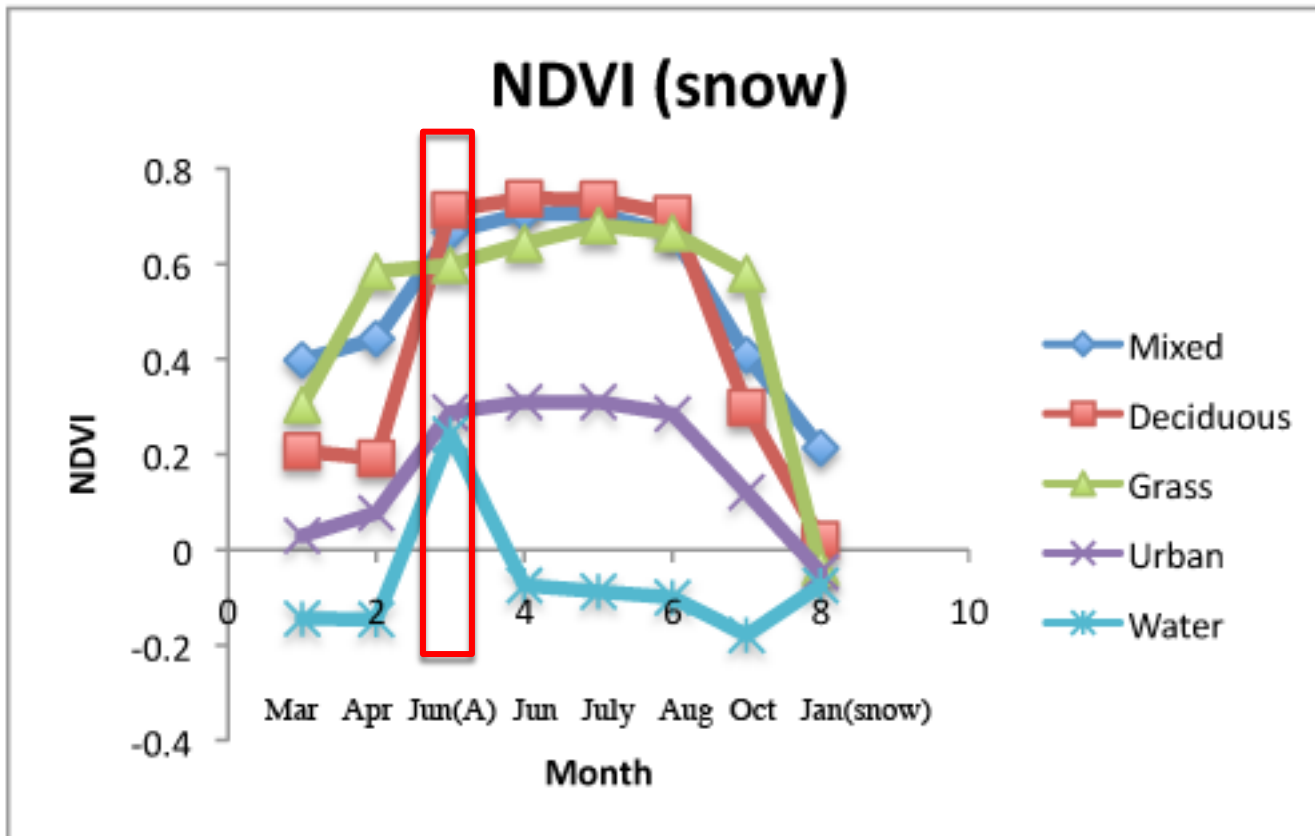
Surface Temperature: Replica 6 comparable with ASTER image, but without snow



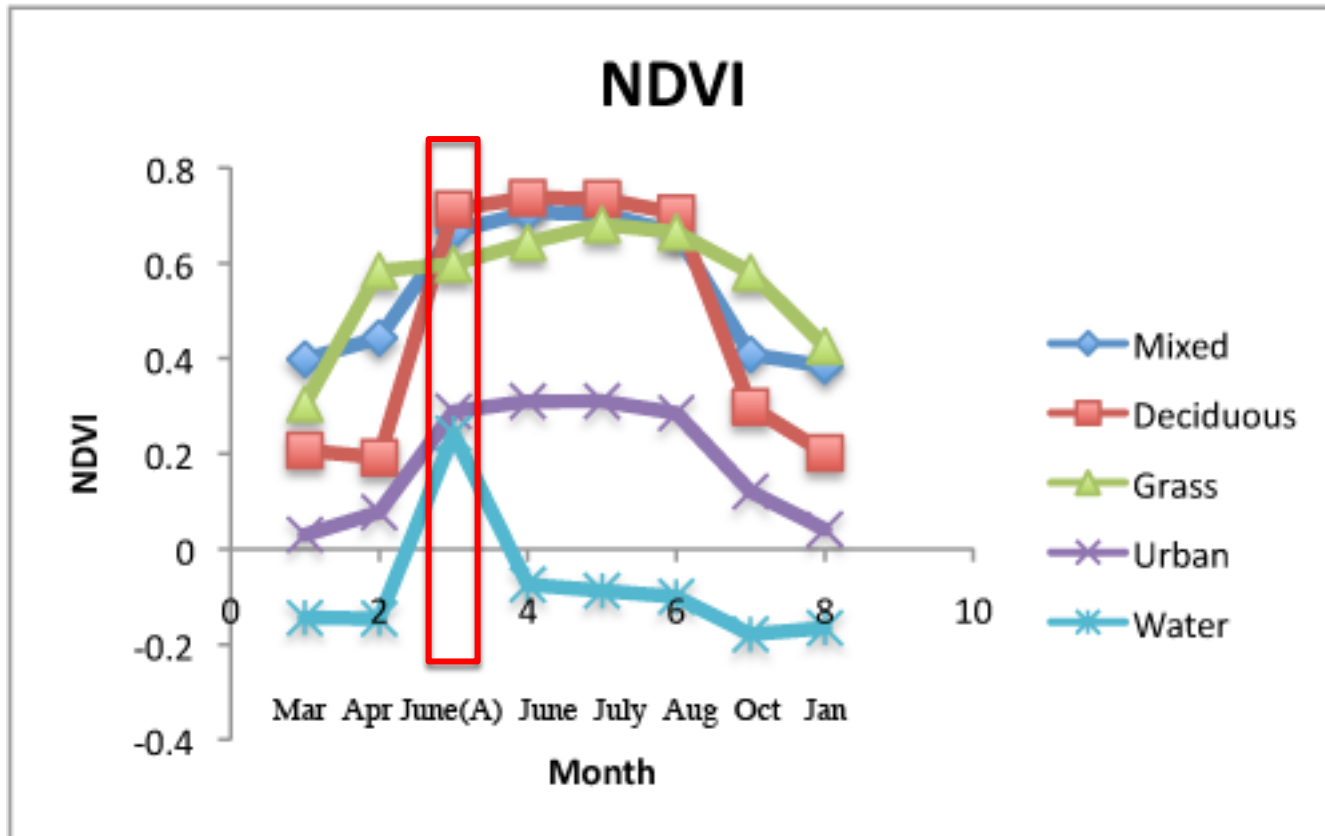
NDVI: Replica 1-5 including the snow image



NDVI: Replica 1-5 without the snow image

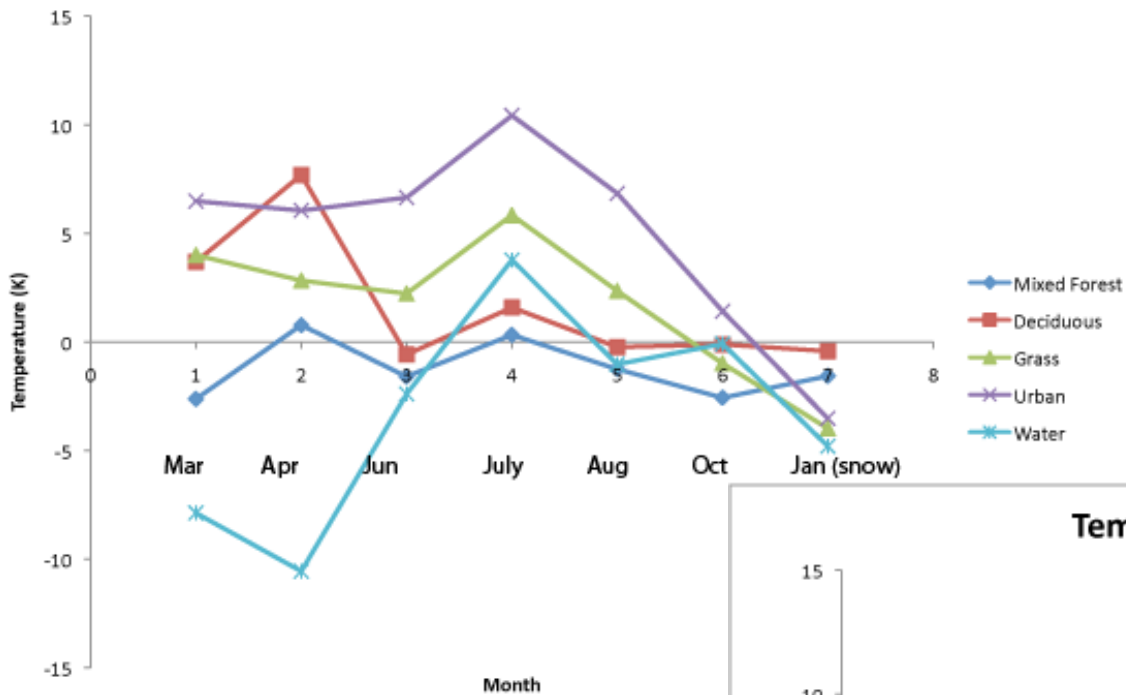


NDVI: Replica 6 compare with ASTER image, with snow



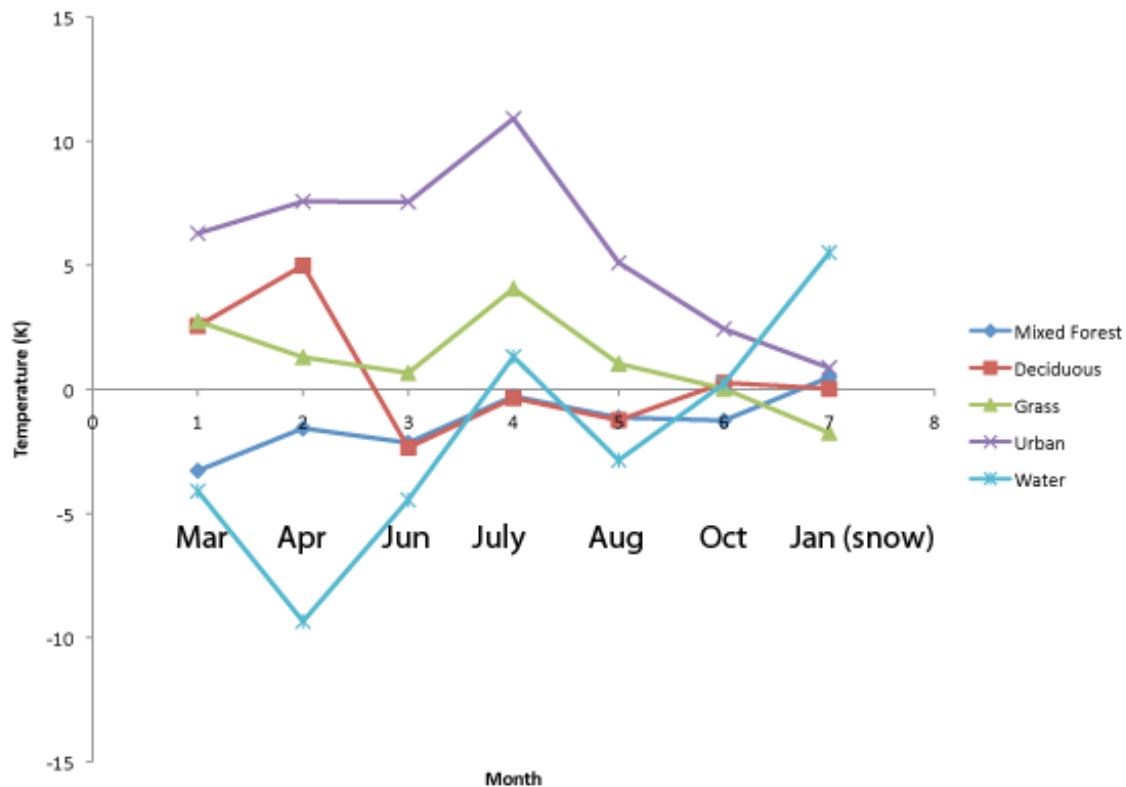
NDVI: Replica 6 comparable with ASTER image, without snow

Temperature Difference (Snow)

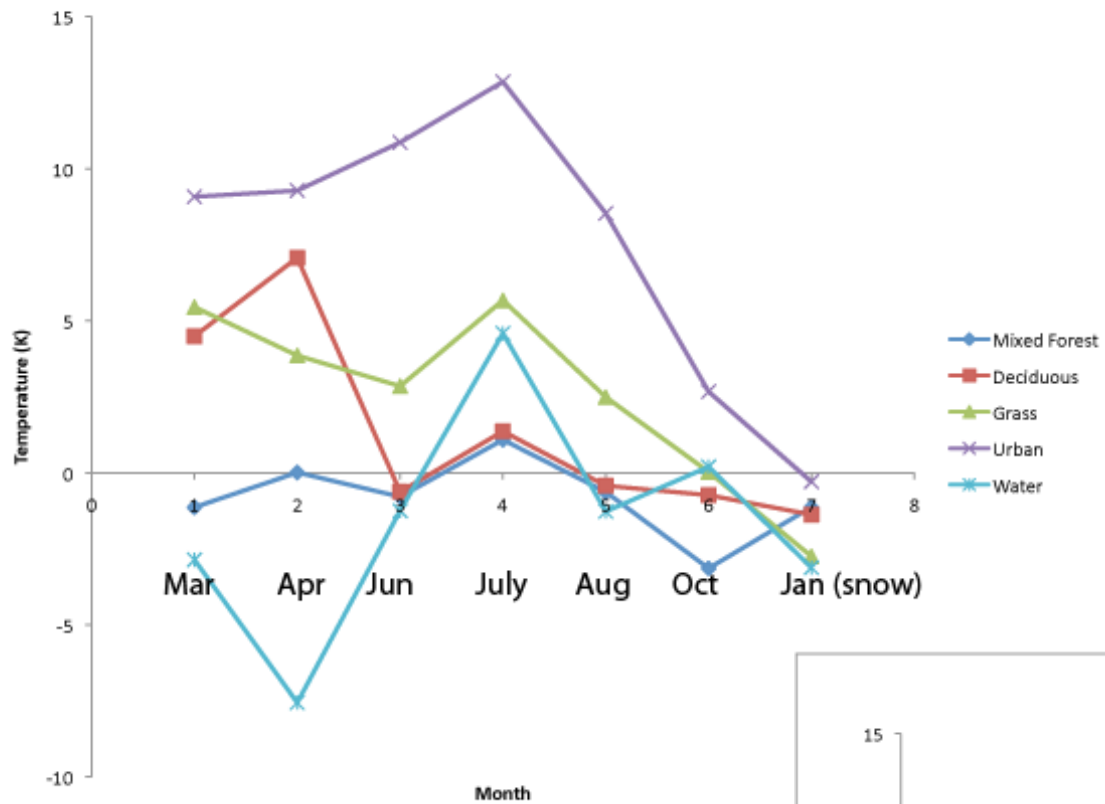


Temperature Difference:
Replica 1-2 including the
snow image

Temperature Difference (Snow)

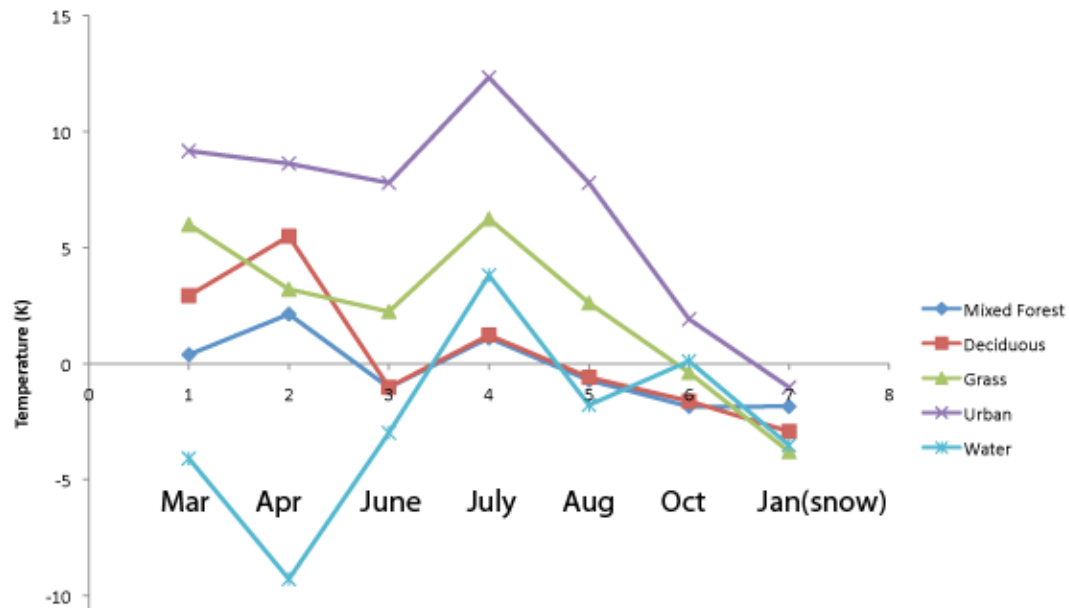


Temperature Difference (Snow)

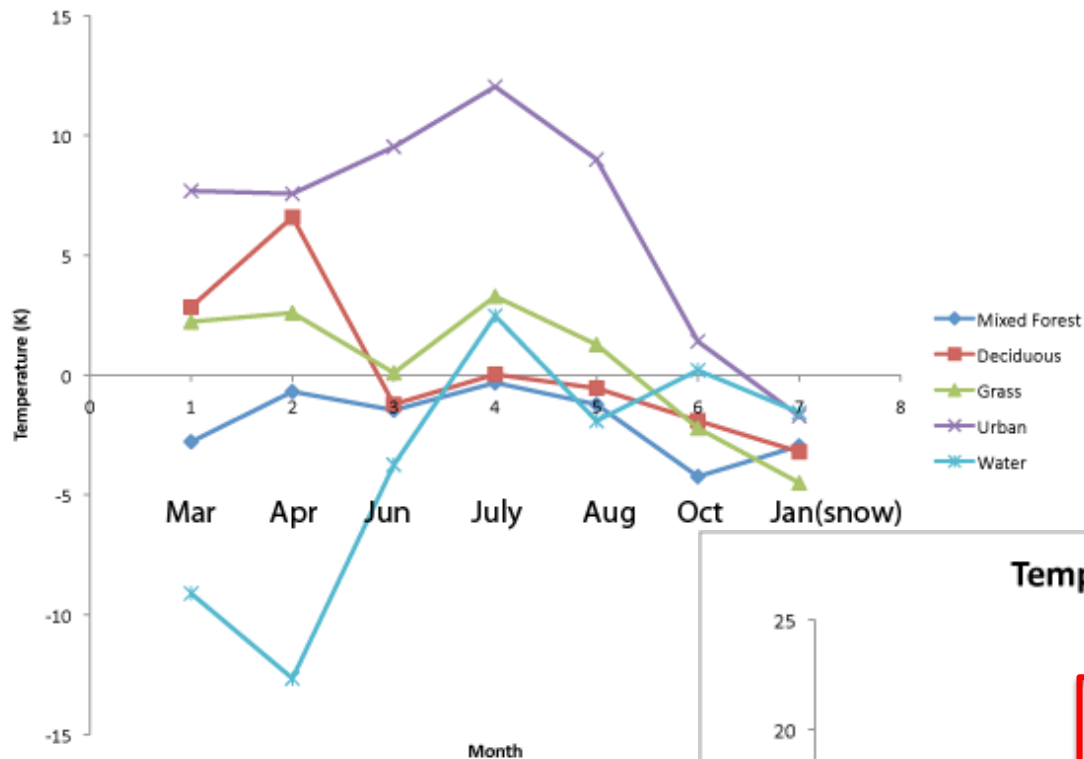


Temperature Difference:
Replica 3-4 including the
snow image

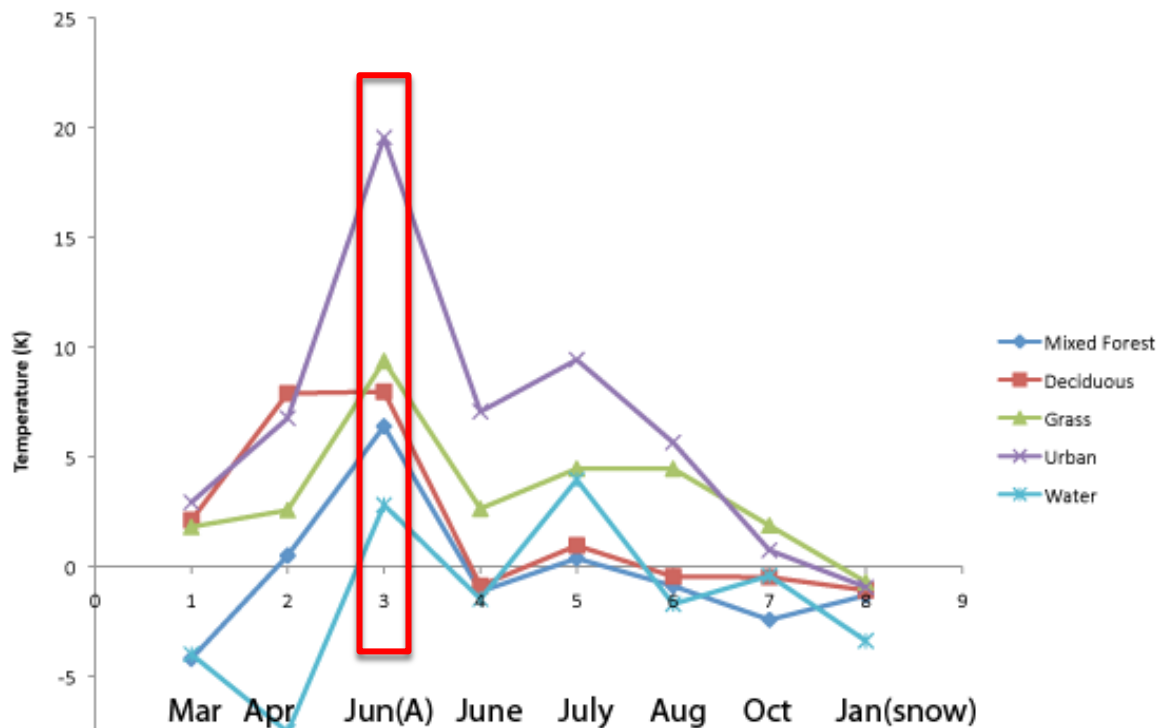
Temperature Difference (Snow)



Temperature Difference (Snow)

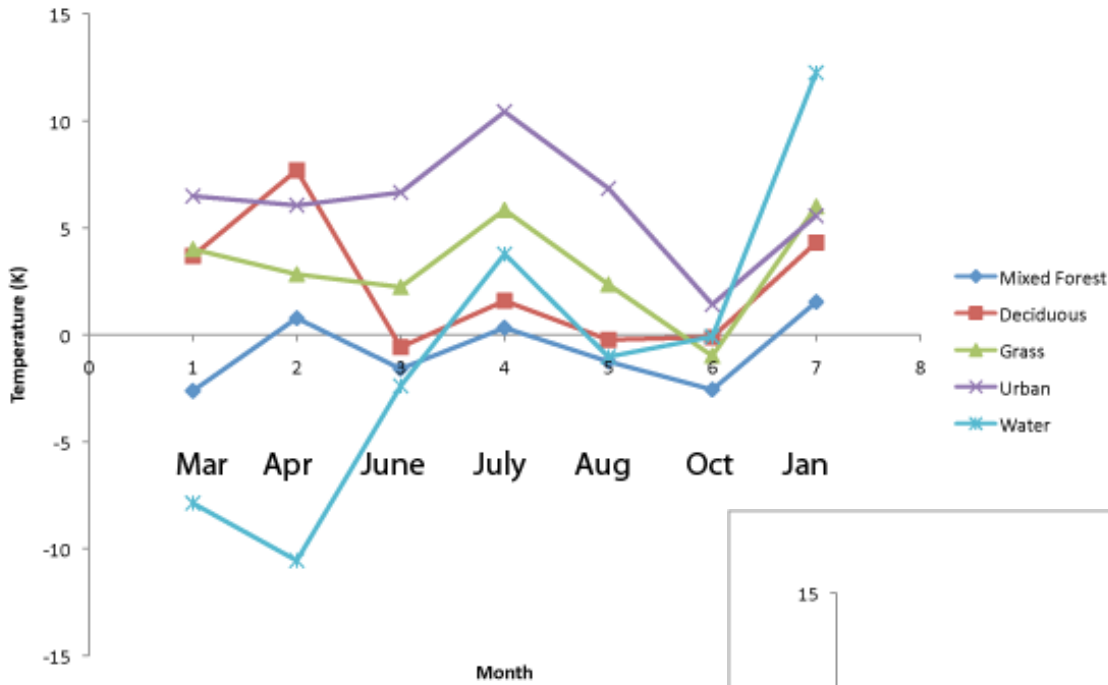


Temperature Difference (Snow)_DAY



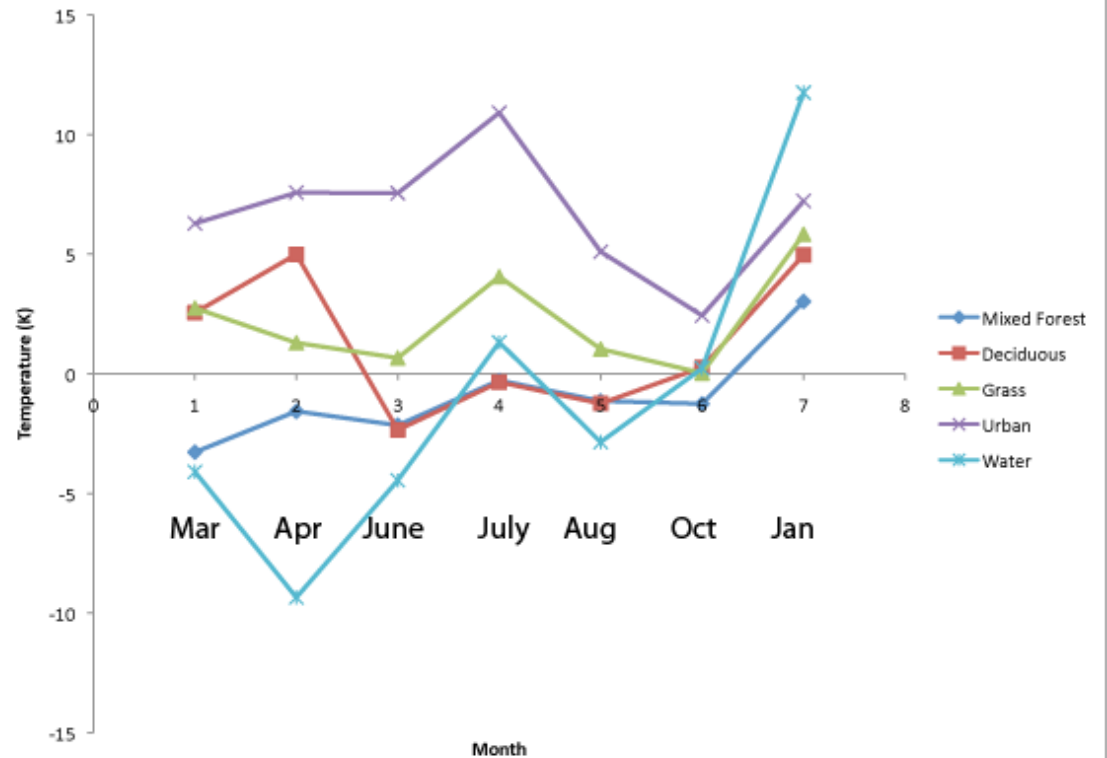
**Temperature Difference:
Replica 5-6 including the
snow image. Replica 6 can
be comparable with ASTER
image**

Temperature Difference

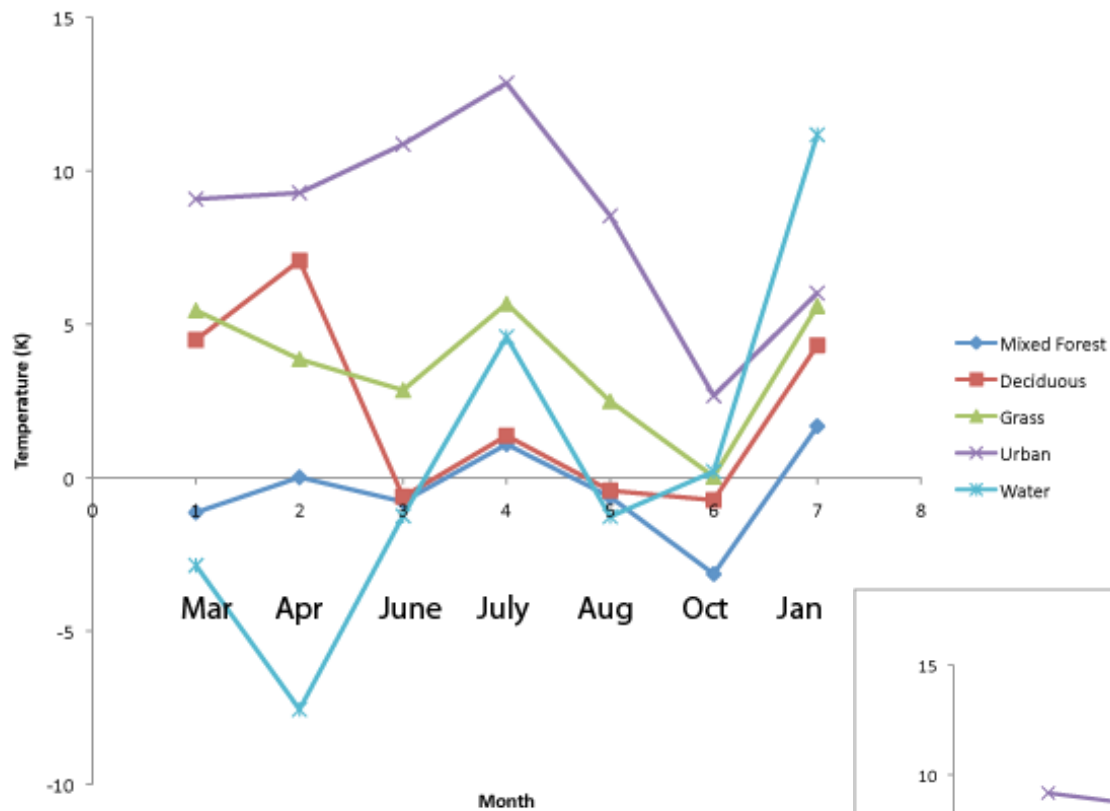


Temperature Difference:
Replica 1-2 without snow

Temperature Difference

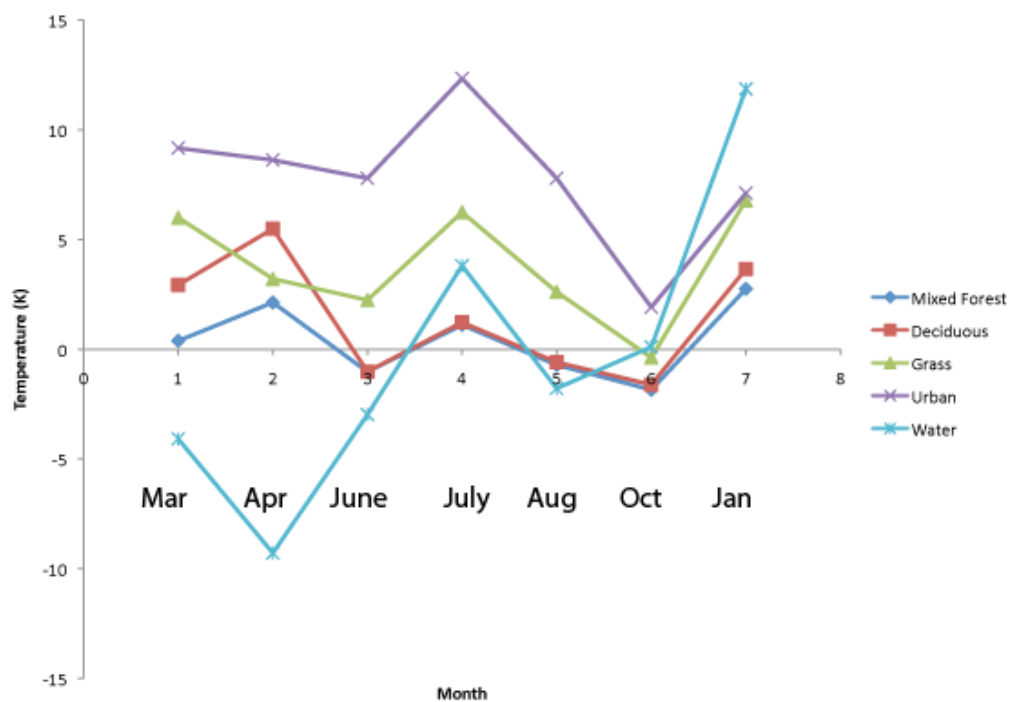


Temperature Difference

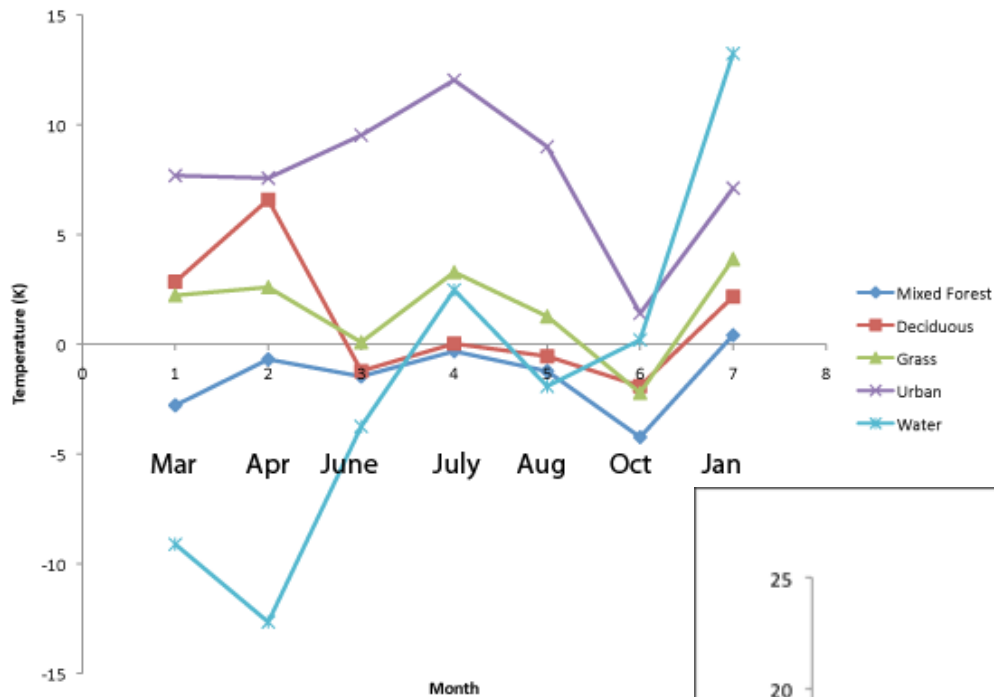


**Temperature Difference:
Replica 3-4 without snow**

Temperature Difference

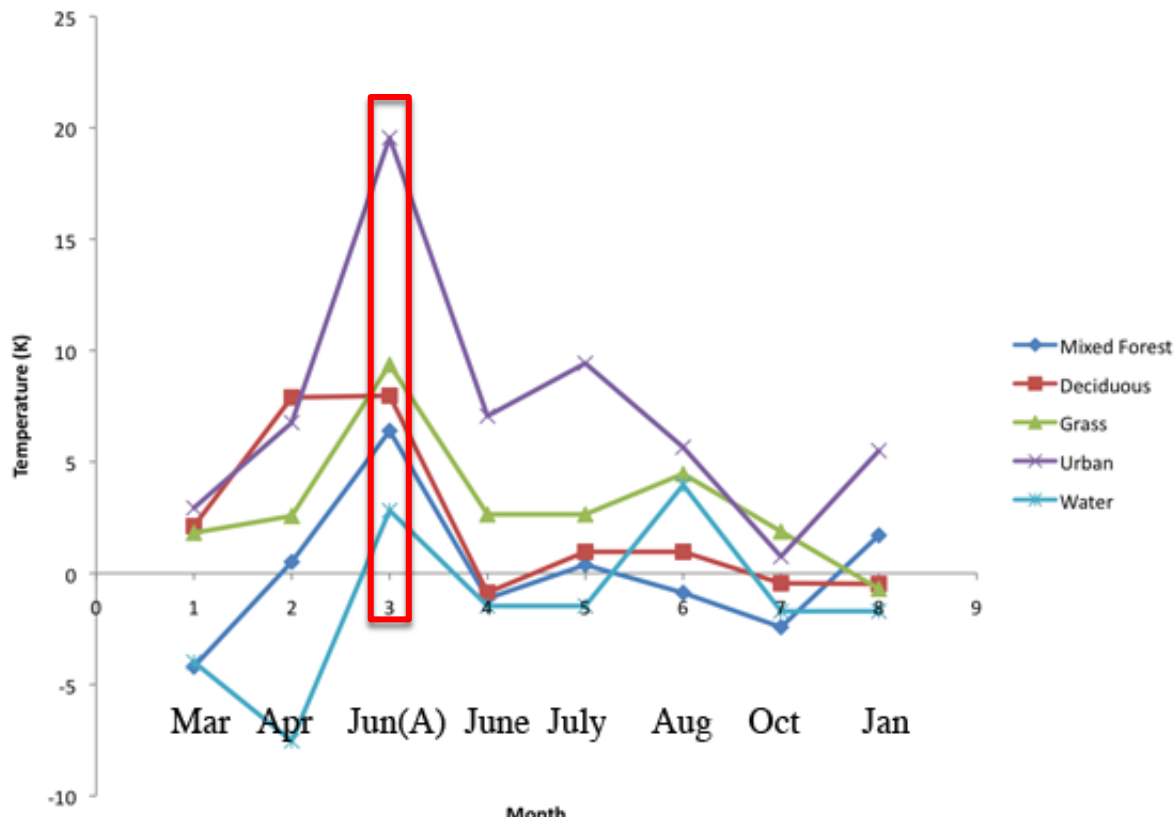


Temperature Difference



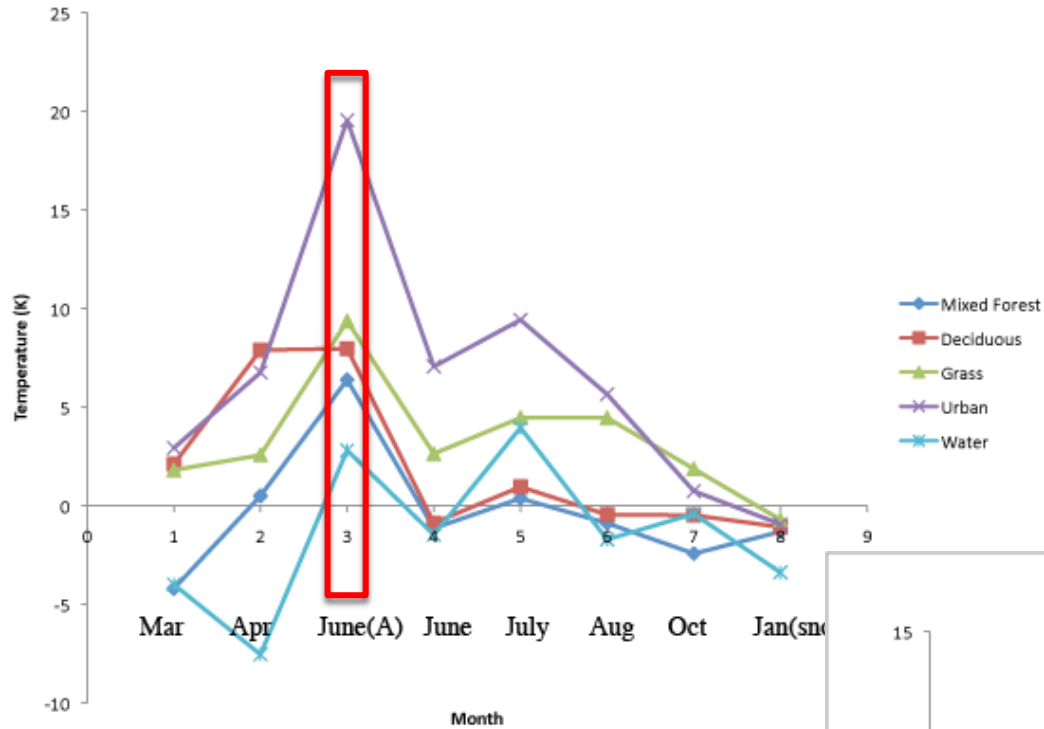
**Temperature Difference:
Replica 5-6 without snow.
Replica 6 can be
comparable with ASTER
image**

Temperature Difference_DAY



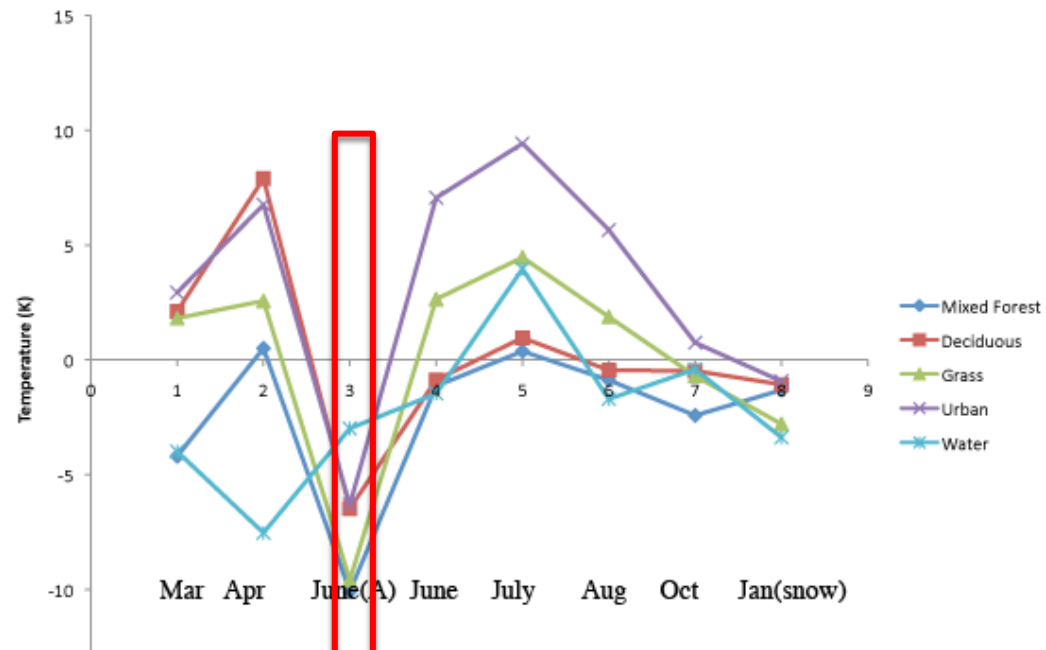
ASTER_Temperature

Temperature Difference (Snow)_DAY



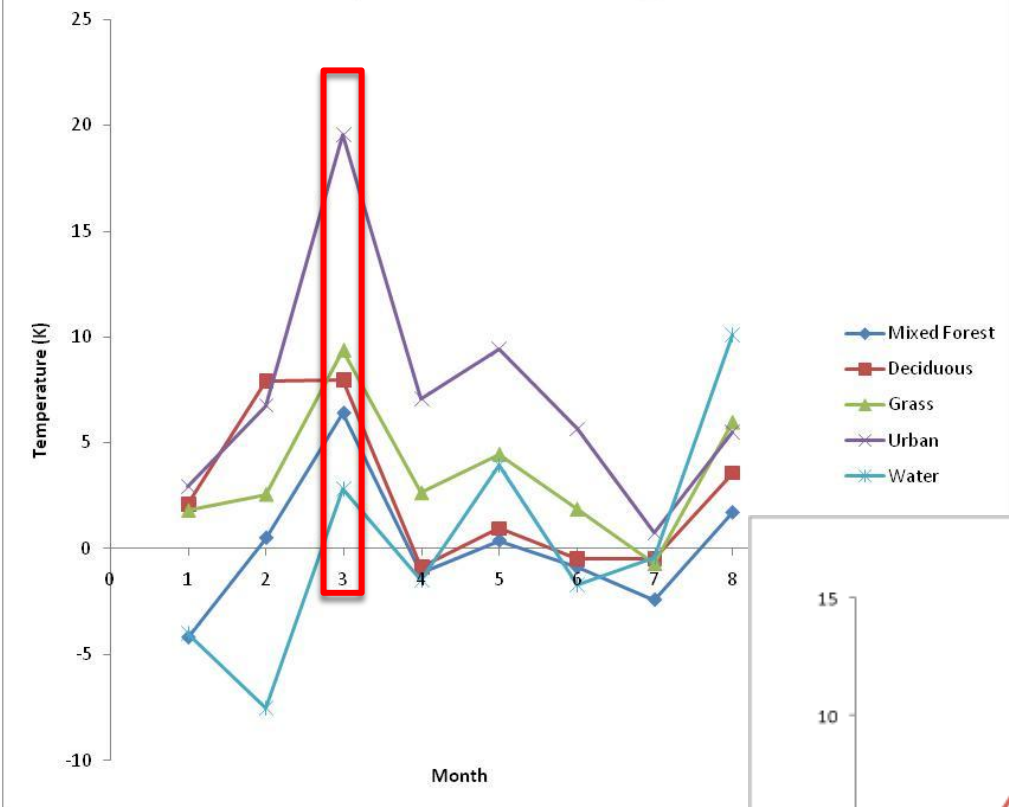
**Temperature Difference:
Replica 6 including the
snow image. (DAY vs.
NIGHT)**

Temperature Difference (Snow)_NIGHT



ASTER_Temperature

Temperature Difference_DAY



**Temperature Difference:
Replica 6 without snow.
(DAY vs. NIGHT)**

Temperature Difference_NIGHT

